



ELECTRONIC COPY

LG750540676
Report verification at igi.org



February 13, 2026
IGI Report Number **LG750540676**
Description **LABORATORY GROWN DIAMOND**
Shape and Cutting Style **CUSHION BRILLIANT**
Measurements **8.43 X 7.32 X 4.22 MM**
GRADING RESULTS
Carat Weight **2.05 CARATS**
Color Grade **FANCY LIGHT PINK**
Clarity Grade **VS 2**

February 13, 2026
IGI Report Number **LG750540676**
Description **LABORATORY GROWN DIAMOND**
Shape and Cutting Style **CUSHION BRILLIANT**
Measurements **8.43 X 7.32 X 4.22 MM**

GRADING RESULTS

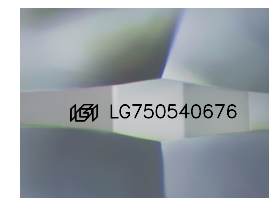
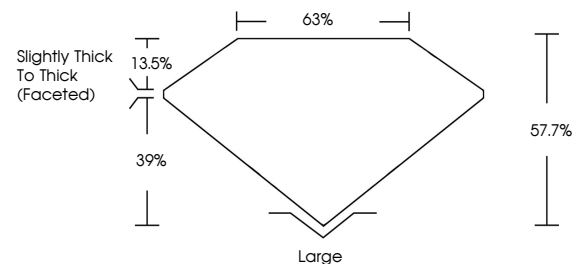
Carat Weight **2.05 CARATS**
Color Grade **FANCY LIGHT PINK**
Clarity Grade **VS 2**

ADDITIONAL GRADING INFORMATION

Polish **EXCELLENT**
Symmetry **EXCELLENT**
Fluorescence **SLIGHT**
Inscription(s) **IGI LG750540676**

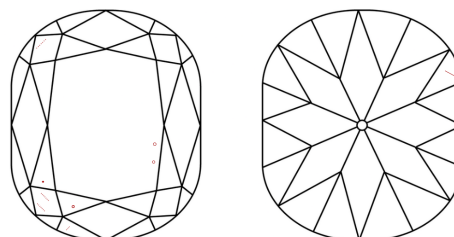
Comments: This Laboratory Grown Diamond was created by Chemical Vapor Deposition (CVD) growth process.
Indications of post-growth treatment.

PROPORTIONS



Sample Image Used

CLARITY CHARACTERISTICS



KEY TO SYMBOLS

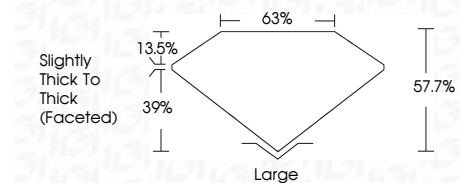
Red symbols indicate internal characteristics.
Green symbols indicate external characteristics.

COLOR

D E F G H I J Faint Very Light Light

CLARITY

FL	IF	VS ¹⁻²	VS ¹⁻²	SI ¹⁻²	I ¹⁻³
Flawless	Internally Flawless	Very Very Slightly Included	Very Slightly Included	Slightly Included	Included



ADDITIONAL GRADING INFORMATION

Polish **EXCELLENT**
Symmetry **EXCELLENT**
Fluorescence **SLIGHT**
Inscription(s) **IGI LG750540676**
Comments: This Laboratory Grown Diamond was created by Chemical Vapor Deposition (CVD) growth process.
Indications of post-growth treatment.



February 13, 2026
IGI Report No **LG750540676**
CUSHION BRILLIANT
8.43 X 7.32 X 4.22 MM
Carat Weight **2.05 CARATS**
Color Grade **FANCY LIGHT PINK**
Clarity Grade **VS 2**
Depth **57.7%**
Table **63%**
Girdle **Slightly Thick To Thick (Faceted)**
Culet **Large**
Polish **EXCELLENT**
Symmetry **EXCELLENT**
Fluorescence **SLIGHT**
Inscription(s) **IGI LG750540676**
Comments: This Laboratory Grown Diamond was created by Chemical Vapor Deposition (CVD) growth process.
Indications of post-growth treatment.