



**ELECTRONIC COPY**

LG750540516  
Report verification at igi.org



November 22, 2025

IGI Report Number **LG750540516**

Description **LABORATORY GROWN DIAMOND**

Shape and Cutting Style **ROUND BRILLIANT**

Measurements **9.38 - 9.42 X 5.72 MM**

**GRADING RESULTS**

Carat Weight **3.08 CARATS**

Color Grade **E**

Clarity Grade **VVS 2**

Cut Grade **IDEAL**

November 22, 2025  
IGI Report Number **LG750540516**  
Description **LABORATORY GROWN DIAMOND**  
Shape and Cutting Style **ROUND BRILLIANT**  
Measurements **9.38 - 9.42 X 5.72 MM**

**GRADING RESULTS**

Carat Weight **3.08 CARATS**

Color Grade **E**

Clarity Grade **VVS 2**

Cut Grade **IDEAL**

**ADDITIONAL GRADING INFORMATION**

Polish **EXCELLENT**

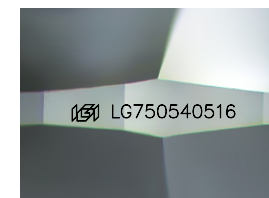
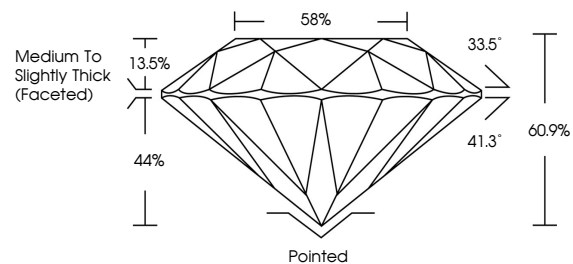
Symmetry **EXCELLENT**

Fluorescence **NONE**

Inscription(s) **IGI LG750540516**

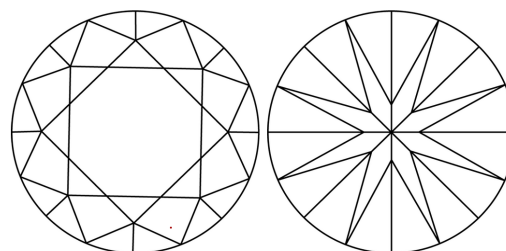
Comments: This Laboratory Grown Diamond was created by Chemical Vapor Deposition (CVD) growth process.  
Type IIa

**PROPORTIONS**



Sample Image Used

**CLARITY CHARACTERISTICS**



**KEY TO SYMBOLS**

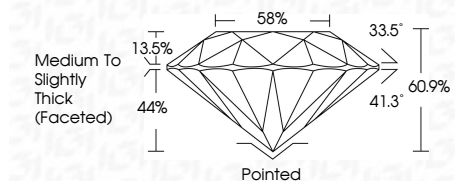
Red symbols indicate internal characteristics.  
Green symbols indicate external characteristics.

**COLOR**

D E F G H I J Faint Very Light Light

**CLARITY**

| FL       | IF                  | VVS <sup>1-2</sup>          | VS <sup>1-2</sup>      | SI <sup>1-2</sup> | I <sup>1-3</sup> |
|----------|---------------------|-----------------------------|------------------------|-------------------|------------------|
| Flawless | Internally Flawless | Very Very Slightly Included | Very Slightly Included | Slightly Included | Included         |



**ADDITIONAL GRADING INFORMATION**

Polish **EXCELLENT**

Symmetry **EXCELLENT**

Fluorescence **NONE**

Inscription(s) **IGI LG750540516**

Comments: This Laboratory Grown Diamond was created by Chemical Vapor Deposition (CVD) growth process.  
Type IIa



|                       |                           |              |             |               |           |       |       |        |                                    |           |           |              |                 |
|-----------------------|---------------------------|--------------|-------------|---------------|-----------|-------|-------|--------|------------------------------------|-----------|-----------|--------------|-----------------|
| November 22, 2025     | IGI Report No LG750540516 | 3.08 CARATS  | E           | VVS 2         | IDEAL     | 60.9% | 33.5° | 41.3°  | Pointed                            | EXCELLENT | EXCELLENT | NONE         | IGI LG750540516 |
| 9.38 - 9.42 X 5.72 MM | ROUND BRILLIANT           | Carat Weight | Color Grade | Clarity Grade | Cut Grade | Depth | Table | Girdle | Medium To Slightly Thick (Faceted) | Polish    | Symmetry  | Fluorescence | Inscription(s)  |

Comments: This Laboratory Grown Diamond was created by Chemical Vapor Deposition (CVD) growth process.  
Type IIa