



ELECTRONIC COPY

LG750540415
Report verification at igi.org



November 27, 2025
IGI Report Number **LG750540415**
Description **LABORATORY GROWN DIAMOND**
Shape and Cutting Style **CUSHION MODIFIED BRILLIANT**
Measurements **6.98 X 6.06 X 4.00 MM**
GRADING RESULTS
Carat Weight **1.50 CARAT**
Color Grade **FANCY DEEP BLUE**
Clarity Grade **VS 1**
Cut Grade **VERY GOOD**

November 27, 2025
IGI Report Number **LG750540415**
Description **LABORATORY GROWN DIAMOND**
Shape and Cutting Style **CUSHION MODIFIED BRILLIANT**
Measurements **6.98 X 6.06 X 4.00 MM**

GRADING RESULTS

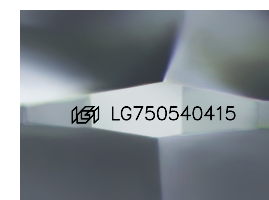
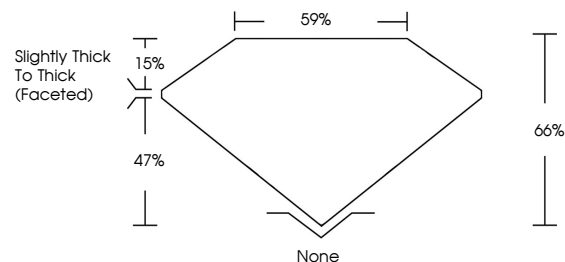
Carat Weight **1.50 CARAT**
Color Grade **FANCY DEEP BLUE**
Clarity Grade **VS 1**
Cut Grade **VERY GOOD**

ADDITIONAL GRADING INFORMATION

Polish **VERY GOOD**
Symmetry **EXCELLENT**
Fluorescence **NONE**
Inscription(s) **IGI LG750540415**

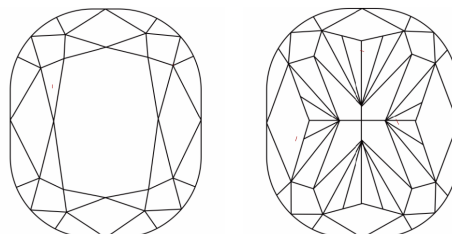
Comments: This Laboratory Grown Diamond was created by Chemical Vapor Deposition (CVD) growth process.
Indications of post-growth treatment.

PROPORTIONS



Sample Image Used

CLARITY CHARACTERISTICS



KEY TO SYMBOLS

Red symbols indicate internal characteristics.
Green symbols indicate external characteristics.

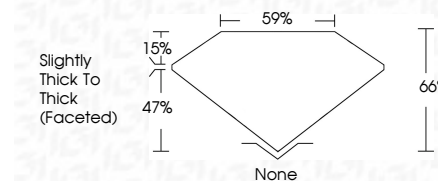
COLOR

D E F G H I J Faint Very Light Light

CLARITY

FL IF VS¹⁻² VS¹⁻² SI¹⁻² I¹⁻³

Flawless Internally Flawless Very Very Slightly Included Very Slightly Included Slightly Included Included



ADDITIONAL GRADING INFORMATION

Polish **VERY GOOD**
Symmetry **EXCELLENT**
Fluorescence **NONE**
Inscription(s) **IGI LG750540415**
Comments: This Laboratory Grown Diamond was created by Chemical Vapor Deposition (CVD) growth process.
Indications of post-growth treatment.



November 27, 2025
IGI Report No LG750540415
CUSHION MODIFIED BRILLIANT
6.98 X 6.06 X 4.00 MM
1.50 CARAT
FANCY DEEP BLUE
VS 1
VERY GOOD
66%
59%
Slightly Thick To Thick (Faceted)
None
VERY GOOD
EXCELLENT
NONE
IGI LG750540415
Comments: This Laboratory Grown Diamond was created by Chemical Vapor Deposition (CVD) growth process.
Indications of post-growth treatment.