



ELECTRONIC COPY

LG750540393
Report verification at igi.org



November 26, 2025

IGI Report Number **LG750540393**

Description **LABORATORY GROWN DIAMOND**

Shape and Cutting Style **CUT CORNERED
RECTANGULAR MIXED CUT**

Measurements **7.56 X 5.58 X 3.89 MM**

GRADING RESULTS

Carat Weight **1.52 CARAT**

Color Grade **FANCY DEEP BLUE GREEN**

Clarity Grade **SI 1**

Cut Grade **VERY GOOD**

November 26, 2025
IGI Report Number **LG750540393**
Description **LABORATORY GROWN DIAMOND**
Shape and Cutting Style **CUT CORNERED RECTANGULAR
MIXED CUT**
Measurements **7.56 X 5.58 X 3.89 MM**

GRADING RESULTS

Carat Weight **1.52 CARAT**

Color Grade **FANCY DEEP BLUE GREEN**

Clarity Grade **SI 1**

Cut Grade **VERY GOOD**

ADDITIONAL GRADING INFORMATION

Polish **VERY GOOD**

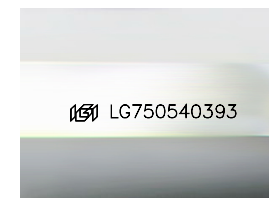
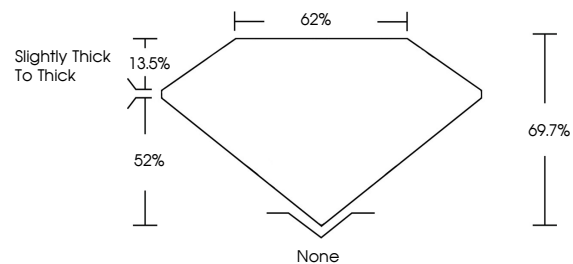
Symmetry **VERY GOOD**

Fluorescence **NONE**

Inscription(s) **IGI LG750540393**

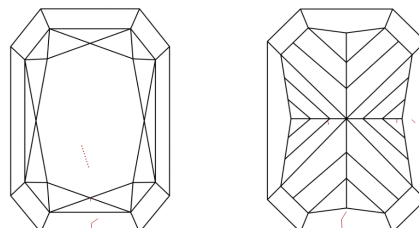
Comments: This Laboratory Grown Diamond was created by Chemical Vapor Deposition (CVD) growth process.
Indications of post-growth treatment.

PROPORTIONS



Sample Image Used

CLARITY CHARACTERISTICS



KEY TO SYMBOLS

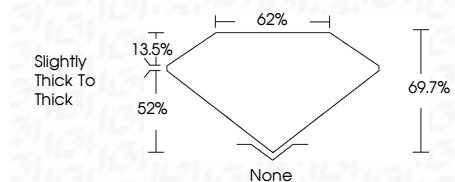
Red symbols indicate internal characteristics.
Green symbols indicate external characteristics.

COLOR

D E F G H I J Faint Very Light Light

CLARITY

FL	IF	VS ¹⁻²	VS ¹⁻²	SI ¹⁻²	I ¹⁻³
Flawless	Internally Flawless	Very Very Slightly Included	Very Slightly Included	Slightly Included	Included



ADDITIONAL GRADING INFORMATION

Polish **VERY GOOD**

Symmetry **VERY GOOD**

Fluorescence **NONE**

Inscription(s) **IGI LG750540393**

Comments: This Laboratory Grown Diamond was created by Chemical Vapor Deposition (CVD) growth process.
Indications of post-growth treatment.



IGI



November 26, 2025
IGI Report No LG750540393
CUT CORNERED RECT. MIXED CUT
1.52 CARAT
FANCY DEEP BLUE GREEN
SI 1
VERY GOOD
69.7%
62%
Slightly Thick to Thick
None
VERY GOOD
VERY GOOD
NONE
NONE
IGI LG750540393
Comments: This Laboratory Grown Diamond was created by Chemical Vapor Deposition (CVD) growth process.
Indications of post-growth treatment.