



ELECTRONIC COPY

LG750540390
Report verification at igi.org



November 27, 2025
IGI Report Number **LG750540390**
Description **LABORATORY GROWN DIAMOND**
Shape and Cutting Style **CUT CORNERED
RECTANGULAR MODIFIED
BRILLIANT**
Measurements **11.90 X 8.30 X 5.19 MM**
GRADING RESULTS
Carat Weight **5.01 CARATS**
Color Grade **FANCY DEEP GREEN BLUE**
Clarity Grade **SI 1**
Cut Grade **VERY GOOD**

November 27, 2025
IGI Report Number **LG750540390**
Description **LABORATORY GROWN DIAMOND**
Shape and Cutting Style **CUT CORNERED RECTANGULAR
MODIFIED BRILLIANT**
Measurements **11.90 X 8.30 X 5.19 MM**

GRADING RESULTS

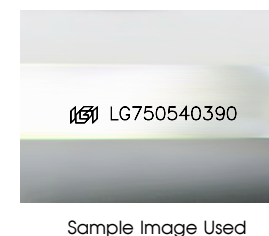
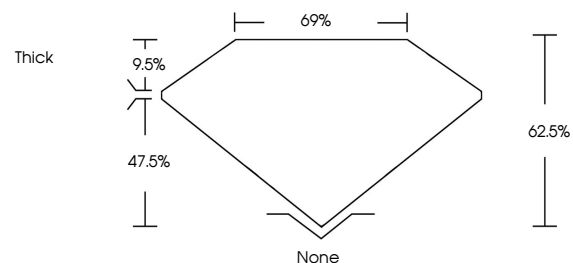
Carat Weight **5.01 CARATS**
Color Grade **FANCY DEEP GREEN BLUE**
Clarity Grade **SI 1**
Cut Grade **VERY GOOD**

ADDITIONAL GRADING INFORMATION

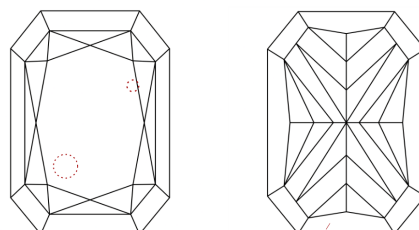
Polish **VERY GOOD**
Symmetry **VERY GOOD**
Fluorescence **NONE**
Inscription(s) **IGI LG750540390**

Comments: This Laboratory Grown Diamond was created by Chemical Vapor Deposition (CVD) growth process.
Indications of post-growth treatment.

PROPORTIONS



CLARITY CHARACTERISTICS



KEY TO SYMBOLS

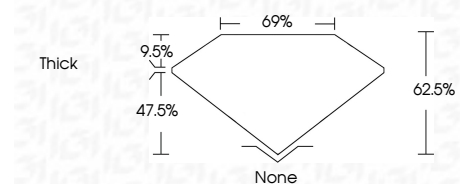
Red symbols indicate internal characteristics.
Green symbols indicate external characteristics.

COLOR

D E F G H I J Faint Very Light Light

CLARITY

FL	IF	VS ¹⁻²	VS ¹⁻²	SI ¹⁻²	I ¹⁻³
Flawless	Internally Flawless	Very Very Slightly Included	Very Slightly Included	Slightly Included	Included



ADDITIONAL GRADING INFORMATION

Polish **VERY GOOD**
Symmetry **VERY GOOD**
Fluorescence **NONE**
Inscription(s) **IGI LG750540390**
Comments: This Laboratory Grown Diamond was created by Chemical Vapor Deposition (CVD) growth process.
Indications of post-growth treatment.



November 27, 2025
IGI Report No LG750540390
CUT CORNERED RECT. MODIFIED BRILLIANT
11.90 X 8.30 X 5.19 MM
5.01 CARATS
FANCY DEEP GREEN BLUE
SI 1
VERY GOOD
62.5%
69%
Thick
None
VERY GOOD
VERY GOOD
NONE
IGI LG750540390
Comments: This Laboratory Grown Diamond was created by Chemical Vapor Deposition (CVD) growth process.
Indications of post-growth treatment.