



ELECTRONIC COPY

LG750540199
Report verification at igi.org



November 26, 2025

IGI Report Number **LG750540199**

Description **LABORATORY GROWN DIAMOND**

Shape and Cutting Style **EMERALD CUT**

Measurements **7.24 X 4.80 X 2.70 MM**

GRADING RESULTS

Carat Weight **1.04 CARAT**

Color Grade **FANCY DEEP GREENISH BLUE**

Clarity Grade **VS 1**

Cut Grade **VERY GOOD**

LABORATORY GROWN DIAMOND REPORT

November 26, 2025

IGI Report Number **LG750540199**

Description **LABORATORY GROWN DIAMOND**

Shape and Cutting Style **EMERALD CUT**

Measurements **7.24 X 4.80 X 2.70 MM**

GRADING RESULTS

Carat Weight **1.04 CARAT**

Color Grade **FANCY DEEP GREENISH BLUE**

Clarity Grade **VS 1**

Cut Grade **VERY GOOD**

ADDITIONAL GRADING INFORMATION

Polish **EXCELLENT**

Symmetry **VERY GOOD**

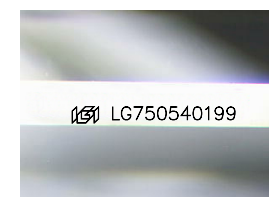
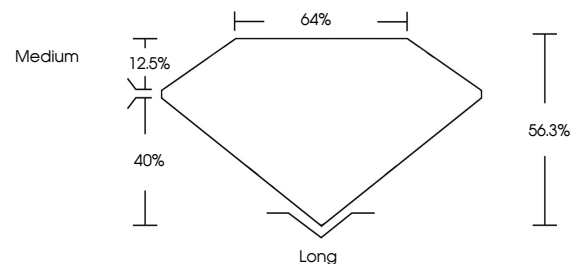
Fluorescence **NONE**

Inscription(s) **IGI LG750540199**

Comments: This Laboratory Grown Diamond was created by Chemical Vapor Deposition (CVD) growth process.

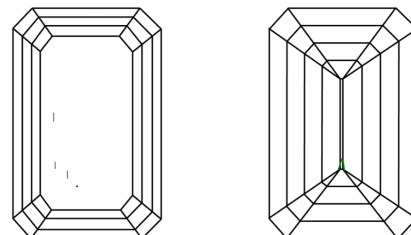
Indications of post-growth treatment.

PROPORTIONS



Sample Image Used

CLARITY CHARACTERISTICS



KEY TO SYMBOLS

Red symbols indicate internal characteristics.
Green symbols indicate external characteristics.

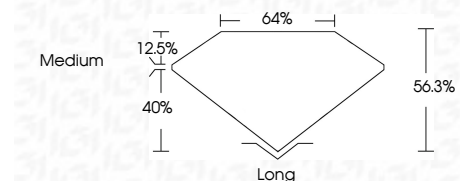
COLOR

D E F G H I J Faint Very Light Light

CLARITY

FL IF VS¹⁻² VS¹⁻² SI¹⁻² I¹⁻³

Flawless Internally Flawless Very Very Slightly Included Very Slightly Included Slightly Included Included



ADDITIONAL GRADING INFORMATION

Polish **EXCELLENT**

Symmetry **VERY GOOD**

Fluorescence **NONE**

Inscription(s) **IGI LG750540199**

Comments: This Laboratory Grown Diamond was created by Chemical Vapor Deposition (CVD) growth process. Indications of post-growth treatment.



November 26, 2025	1.04 CARAT	Long
IGI Report No LG750540199	FANCY DEEP GREENISH BLUE	EXCELLENT
EMERALD CUT	VS 1	VERY GOOD
7.24 X 4.80 X 2.70 MM	VERY GOOD	VERY GOOD
Carat Weight	66.3%	NONE
Color Grade	64%	NONE
Clarity Grade	Medium	IGI LG750540199
Cut Grade		
Depth		
Table		
Girdle		
Culet		
Polish		
Symmetry		
Fluorescence		
Inscription(s)		

Comments: This Laboratory Grown Diamond was created by Chemical Vapor Deposition (CVD) growth process. Indications of post-growth treatment.