



ELECTRONIC COPY

LG750540185
Report verification at igi.org



November 26, 2025
IGI Report Number **LG750540185**
Description **LABORATORY GROWN DIAMOND**
Shape and Cutting Style **EMERALD CUT**
Measurements **7.28 X 4.84 X 3.49 MM**
GRADING RESULTS
Carat Weight **1.23 CARAT**
Color Grade **FANCY DEEP GREENISH BLUE**
Clarity Grade **VS 1**
Cut Grade **VERY GOOD**

November 26, 2025
IGI Report Number **LG750540185**
Description **LABORATORY GROWN DIAMOND**
Shape and Cutting Style **EMERALD CUT**
Measurements **7.28 X 4.84 X 3.49 MM**

GRADING RESULTS

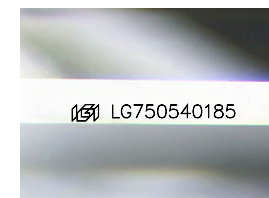
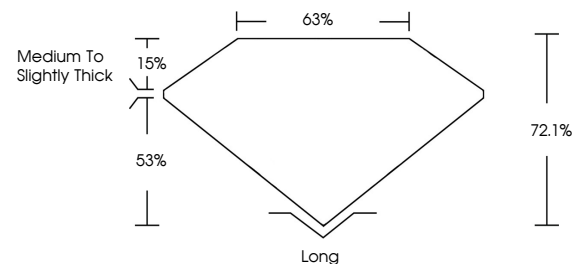
Carat Weight **1.23 CARAT**
Color Grade **FANCY DEEP GREENISH BLUE**
Clarity Grade **VS 1**
Cut Grade **VERY GOOD**

ADDITIONAL GRADING INFORMATION

Polish **EXCELLENT**
Symmetry **EXCELLENT**
Fluorescence **NONE**
Inscription(s) **LG750540185**

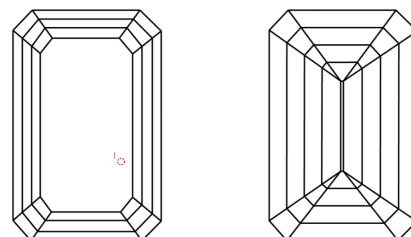
Comments: This Laboratory Grown Diamond was created by Chemical Vapor Deposition (CVD) growth process.
Indications of post-growth treatment.

PROPORTIONS



Sample Image Used

CLARITY CHARACTERISTICS



KEY TO SYMBOLS

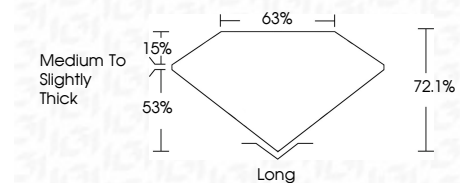
Red symbols indicate internal characteristics.
Green symbols indicate external characteristics.

COLOR

D E F G H I J Faint Very Light Light

CLARITY

FL	IF	VS ¹⁻²	VS ¹⁻²	SI ¹⁻²	I ¹⁻³
Flawless	Internally Flawless	Very Very Slightly Included	Very Slightly Included	Slightly Included	Included



ADDITIONAL GRADING INFORMATION

Polish **EXCELLENT**
Symmetry **EXCELLENT**
Fluorescence **NONE**
Inscription(s) **LG750540185**
Comments: This Laboratory Grown Diamond was created by Chemical Vapor Deposition (CVD) growth process.
Indications of post-growth treatment.



November 26, 2025
IGI Report No **LG750540185**
EMERALD CUT
Carat Weight **1.23 CARAT**
Color Grade **FANCY DEEP GREENISH BLUE**
Clarity Grade **VS 1**
Depth **72.1%**
Table **63%**
Girdle **Medium to Slightly Thick**
Culet **Long**
Polish **EXCELLENT**
Symmetry **EXCELLENT**
Fluorescence **NONE**
Inscription(s) **LG750540185**
Comments: This Laboratory Grown Diamond was created by Chemical Vapor Deposition (CVD) growth process.
Indications of post-growth treatment.