



ELECTRONIC COPY

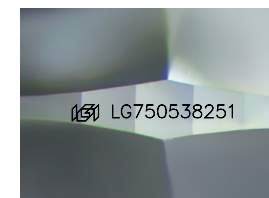
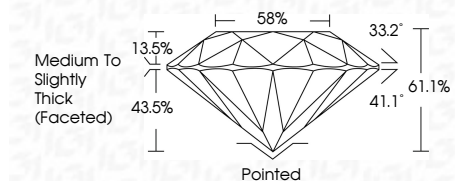
LG750538251
Report verification at igi.org



November 19, 2025
IGI Report Number LG750538251
Description LABORATORY GROWN DIAMOND
Shape and Cutting Style ROUND BRILLIANT
Measurements 10.60 - 10.64 X 6.49 MM

GRADING RESULTS

Carat Weight 4.53 CARATS
Color Grade D
Clarity Grade VS 1
Cut Grade IDEAL



Sample Image Used

ADDITIONAL GRADING INFORMATION

Polish EXCELLENT
Symmetry EXCELLENT
Fluorescence NONE
Inscription(s) IGI LG750538251
Comments: This Laboratory Grown Diamond was created by Chemical Vapor Deposition (CVD) growth process. Type IIa



November 19, 2025
IGI Report No LG750538251
ROUND BRILLIANT
4.53 CARATS D
10.60 - 10.64 X 6.49 MM
Color Grade D
Clarity Grade VS 1
Cut Grade IDEAL
Depth 61.1%
Table 58%
Medium To Slightly Thick (Faceted)
Pointed EXCELLENT
Polish EXCELLENT
Symmetry EXCELLENT
Fluorescence NONE
Inscription(s) IGI LG750538251
Comments: This Laboratory Grown Diamond was created by Chemical Vapor Deposition (CVD) growth process. Type IIa

LABORATORY GROWN DIAMOND REPORT

November 19, 2025
IGI Report Number LG750538251
Description LABORATORY GROWN DIAMOND
Shape and Cutting Style ROUND BRILLIANT
Measurements 10.60 - 10.64 X 6.49 MM

GRADING RESULTS

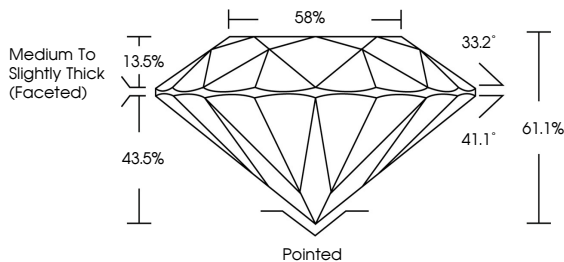
Carat Weight 4.53 CARATS
Color Grade D
Clarity Grade VS 1
Cut Grade IDEAL

ADDITIONAL GRADING INFORMATION

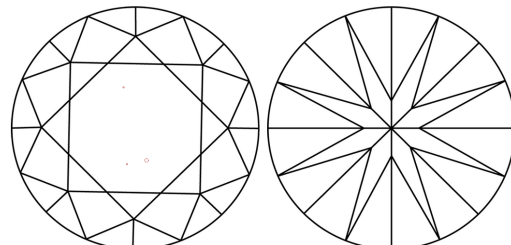
Polish EXCELLENT
Symmetry EXCELLENT
Fluorescence NONE
Inscription(s) IGI LG750538251

Comments: This Laboratory Grown Diamond was created by Chemical Vapor Deposition (CVD) growth process. Type IIa

PROPORTIONS



CLARITY CHARACTERISTICS



KEY TO SYMBOLS

Red symbols indicate internal characteristics.
Green symbols indicate external characteristics.

COLOR

D E F G H I J Faint Very Light Light

CLARITY

FL IF VS 1-2 VS 2-3 SI 1-2 I 1-3
Flawless Internally Flawless Very Very Slightly Included Very Slightly Included Slightly Included Included

