



# INTERNATIONAL GEMOLOGICAL INSTITUTE

## LABORATORY GROWN DIAMOND REPORT

November 19, 2025

IGI Report Number

LG750533438

Description

LABORATORY GROWN DIAMOND

Shape and Cutting Style

MARQUISE BRILLIANT

Measurements

9.42 X 4.90 X 3.07 MM

### GRADING RESULTS

Carat Weight

0.83 CARAT

Color Grade

D

Clarity Grade

VS 1

### ADDITIONAL GRADING INFORMATION

Polish

EXCELLENT

Symmetry

EXCELLENT

Fluorescence

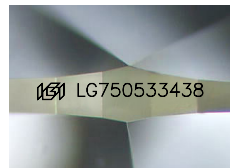
NONE

Inscription(s)

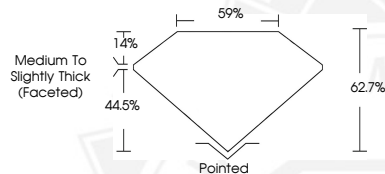
IGI LG750533438

Comments: This Laboratory Grown Diamond was created by Chemical Vapor Deposition (CVD) growth process. Type IIa

ELECTRONIC COPY



Sample Image Used



November 19, 2025

IGI Report Number LG750533438

MARQUISE BRILLIANT

LABORATORY GROWN DIAMOND

9.42 X 4.90 X 3.07 MM

Carat Weight 0.83 CARAT

Color Grade D

Clarity Grade VS 1

Polish EXCELLENT

Symmetry EXCELLENT

Fluorescence NONE

Inscription(s) IGI LG750533438

Comments: This Laboratory Grown Diamond was created by Chemical Vapor Deposition (CVD) growth process. Type IIa



November 19, 2025

IGI Report Number LG750533438

MARQUISE BRILLIANT

LABORATORY GROWN DIAMOND

9.42 X 4.90 X 3.07 MM

Carat Weight 0.83 CARAT

Color Grade D

Clarity Grade VS 1

Polish EXCELLENT

Symmetry EXCELLENT

Fluorescence NONE

Inscription(s) IGI LG750533438

Comments: This Laboratory Grown Diamond was created by Chemical Vapor Deposition (CVD) growth process. Type IIa



THIS DOCUMENT WAS PRODUCED WITH THE FOLLOWING SECURITY MEASURES: SPECIAL DOCUMENT PAPER, INK SCREENS, WATERMARK, BACKGROUND DESIGNS, HOLOGRAM AND OTHER SECURITY FEATURES NOT LISTED AND DO EXCEED DOCUMENT SECURITY INDUSTRY GUIDELINES.

For terms & conditions and to verify this report, please visit [www.igi.org](http://www.igi.org)