



**INTERNATIONAL
GEMOLOGICAL
INSTITUTE**

ELECTRONIC COPY



November 19, 2025

IGI Report Number LG750533090
ROUND BRILLIANT
LABORATORY GROWN DIAMOND
4.93 - 4.97 X 3.02 MM

0.45 CARAT
D
VVS 1
IDEAL
EXCELLENT
EXCELLENT
NONE
IGI LG750533090

Comments: This Laboratory Grown Diamond was created by Chemical Vapor Deposition (CVD) growth process. Type IIa

LABORATORY GROWN DIAMOND REPORT

November 19, 2025
IGI Report Number **LG750533090**
Description **LABORATORY GROWN DIAMOND**
Shape and Cutting Style **ROUND BRILLIANT**
Measurements **4.93 - 4.97 X 3.02 MM**

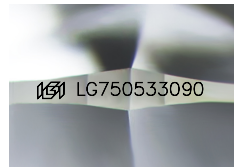
GRADING RESULTS

Carat Weight **0.45 CARAT**
Color Grade **D**
Clarity Grade **VVS 1**
Cut Grade **IDEAL**

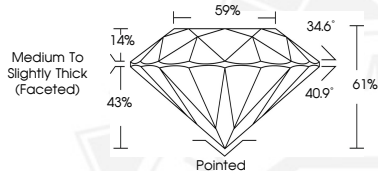
ADDITIONAL GRADING INFORMATION

Polish **EXCELLENT**
Symmetry **EXCELLENT**
Fluorescence **NONE**
Inscription(s) **IGI LG750533090**

Comments: This Laboratory Grown Diamond was created by Chemical Vapor Deposition (CVD) growth process. Type IIa



Sample Image Used



November 19, 2025

IGI Report Number LG750533090
ROUND BRILLIANT
LABORATORY GROWN DIAMOND
4.93 - 4.97 X 3.02 MM

0.45 CARAT
D
VVS 1
IDEAL
EXCELLENT
EXCELLENT
NONE
IGI LG750533090

Comments: This Laboratory Grown Diamond was created by Chemical Vapor Deposition (CVD) growth process. Type IIa



THIS DOCUMENT WAS PRODUCED WITH THE FOLLOWING SECURITY MEASURES: SPECIAL DOCUMENT PAPER, INK SCREENS, WATERMARK, BACKGROUND DESIGNS, HOLOGRAM AND OTHER SECURITY FEATURES NOT LISTED AND DO EXCEED DOCUMENT SECURITY INDUSTRY GUIDELINES.

For terms & conditions and to verify this report, please visit www.igi.org