



ELECTRONIC COPY

LG750531531
Report verification at igi.org



December 3, 2025

IGI Report Number **LG750531531**

Description **LABORATORY GROWN DIAMOND**

Shape and Cutting Style **CUT CORNERED
RECTANGULAR MODIFIED
BRILLIANT**

Measurements **11.18 X 7.47 X 5.15 MM**

GRADING RESULTS

Carat Weight **4.11 CARATS**

Color Grade **FANCY YELLOW**

Clarity Grade **VS 1**

LABORATORY GROWN DIAMOND REPORT

December 3, 2025

IGI Report Number **LG750531531**

Description **LABORATORY GROWN DIAMOND**

Shape and Cutting Style **CUT CORNERED RECTANGULAR
MODIFIED BRILLIANT**

Measurements **11.18 X 7.47 X 5.15 MM**

GRADING RESULTS

Carat Weight **4.11 CARATS**

Color Grade **FANCY YELLOW**

Clarity Grade **VS 1**

ADDITIONAL GRADING INFORMATION

Polish **VERY GOOD**

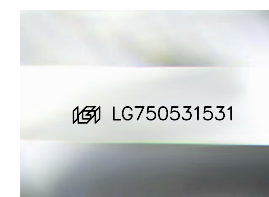
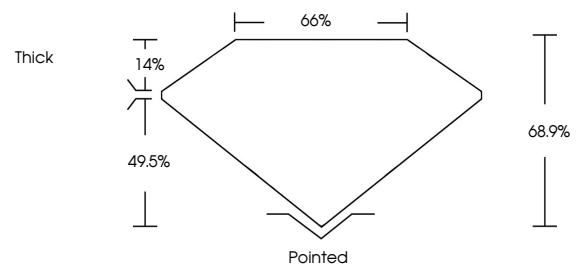
Symmetry **VERY GOOD**

Fluorescence **NONE**

Inscription(s) **IGI LG750531531**

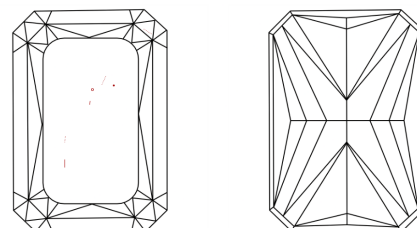
Comments: This Laboratory Grown Diamond was created by Chemical Vapor Deposition (CVD) growth process.

PROPORTIONS



Sample Image Used

CLARITY CHARACTERISTICS



KEY TO SYMBOLS

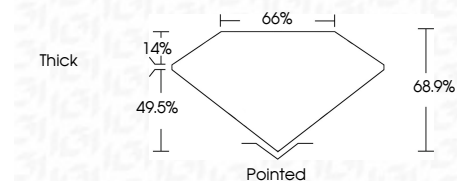
Red symbols indicate internal characteristics.
Green symbols indicate external characteristics.

COLOR

D E F G H I J Faint Very Light Light

CLARITY

FL	IF	VS ¹⁻²	VS ¹⁻²	SI ¹⁻²	I ¹⁻³
Flawless	Internally Flawless	Very Very Slightly Included	Very Slightly Included	Slightly Included	Included



ADDITIONAL GRADING INFORMATION

Polish **VERY GOOD**

Symmetry **VERY GOOD**

Fluorescence **NONE**

Inscription(s) **IGI LG750531531**

Comments: This Laboratory Grown Diamond was created by Chemical Vapor Deposition (CVD) growth process.



December 3, 2025
IGI Report No LG750531531
CUT CORNERED RECT. MODIFIED BRILLIANT
4.11 CARATS
FANCY YELLOW
VS 1
68.9%
66%
Thick
Pointed
Polish
VERY GOOD
Symmetry
VERY GOOD
Fluorescence
NONE
Inscription(s)
IGI LG750531531
Comments: This Laboratory Grown Diamond was created by Chemical Vapor Deposition (CVD) growth process.