



ELECTRONIC COPY

LG750531150
Report verification at igi.org



December 2, 2025
IGI Report Number **LG750531150**
Description **LABORATORY GROWN DIAMOND**
Shape and Cutting Style **CUSHION MODIFIED BRILLIANT**
Measurements **10.70 X 9.77 X 6.43 MM**
GRADING RESULTS
Carat Weight **6.24 CARATS**
Color Grade **FANCY INTENSE YELLOW**
Clarity Grade **VS 2**

December 2, 2025
IGI Report Number **LG750531150**
Description **LABORATORY GROWN DIAMOND**
Shape and Cutting Style **CUSHION MODIFIED BRILLIANT**
Measurements **10.70 X 9.77 X 6.43 MM**

GRADING RESULTS

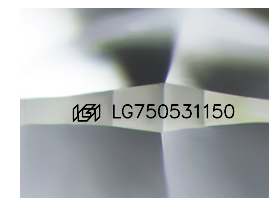
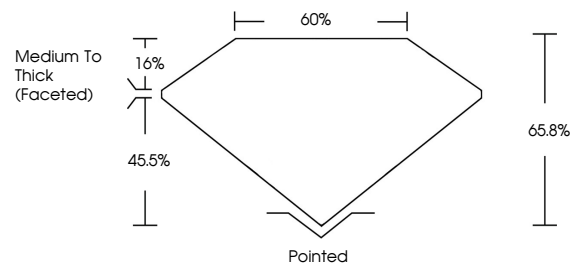
Carat Weight **6.24 CARATS**
Color Grade **FANCY INTENSE YELLOW**
Clarity Grade **VS 2**

ADDITIONAL GRADING INFORMATION

Polish **VERY GOOD**
Symmetry **VERY GOOD**
Fluorescence **NONE**
Inscription(s) **IGI LG750531150**

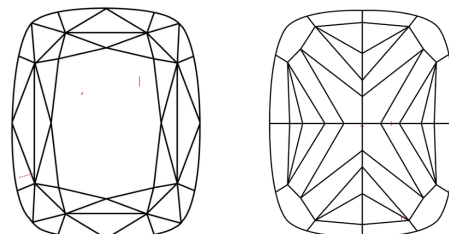
Comments: This Laboratory Grown Diamond was created by Chemical Vapor Deposition (CVD) growth process.

PROPORTIONS



Sample Image Used

CLARITY CHARACTERISTICS



KEY TO SYMBOLS

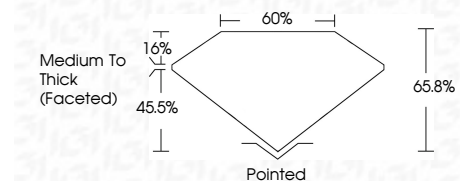
Red symbols indicate internal characteristics.
Green symbols indicate external characteristics.

COLOR

D E F G H I J Faint Very Light Light

CLARITY

FL	IF	VS ¹⁻²	VS ¹⁻²	SI ¹⁻²	I ¹⁻³
Flawless	Internally Flawless	Very Very Slightly Included	Very Slightly Included	Slightly Included	Included



ADDITIONAL GRADING INFORMATION

Polish **VERY GOOD**
Symmetry **VERY GOOD**
Fluorescence **NONE**
Inscription(s) **IGI LG750531150**
Comments: This Laboratory Grown Diamond was created by Chemical Vapor Deposition (CVD) growth process.



IGI



December 2, 2025
IGI Report No **LG750531150**
CUSHION MODIFIED BRILLIANT
6.24 CARATS
Carat Weight **FANCY INTENSE YELLOW**
Color Grade **VS 2**
Clarity Grade **65.8%**
Depth **60%**
Table **Medium To Thick (Faceted)**
Girdle **Pointed**
Culet **VERY GOOD**
Polish **VERY GOOD**
Symmetry **NONE**
Fluorescence **NONE**
Inscription(s) **IGI LG750531150**
Comments: This Laboratory Grown Diamond was created by Chemical Vapor Deposition (CVD) growth process.