



**ELECTRONIC COPY**

## LABORATORY GROWN DIAMOND REPORT

November 24, 2025	
IGI Report Number	LG750530209
Description	LABORATORY GROWN DIAMOND
Shape and Cutting Style	CUT CORNERED RECTANGULAR MODIFIED BRILLIANT
Measurements	16.19 X 10.66 X 6.57 MM

## GRADING RESULTS

Carat Weight	10.07 CARATS
Color Grade	F
Clarity Grade	VVS 2

### ADDITIONAL GRADING INFORMATION

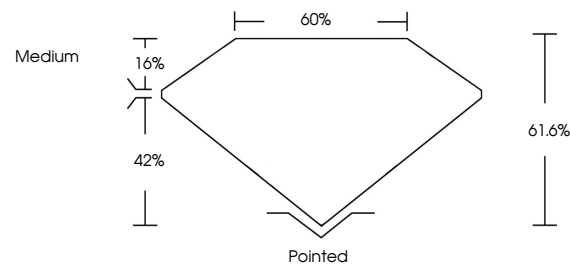
Polish	EXCELLENT
Symmetry	EXCELLENT
Fluorescence	NONE

Inscription(s)  LG750530209

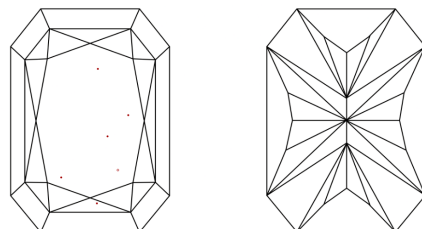
Comments: This Laboratory Grown Diamond was created by Chemical Vapor Deposition (CVD) growth process.  
Type IIa

LG750530209  
Report verification at [lgi.org](https://lgi.org)

## PROPORTIONS

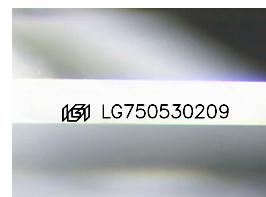


## CLARITY CHARACTERISTICS



## KEY TO SYMBOLS

Red symbols indicate internal characteristics.  
Green symbols indicate external characteristics.



Sample Image Used

## COLOR

D E F G H I J Faint Very Light Light

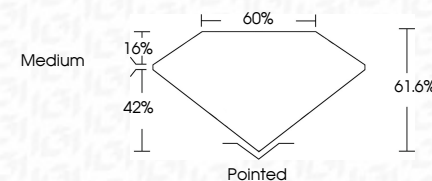
## CLARITY

FL	IF	VVS <sup>1-2</sup>	VS <sup>1-2</sup>	SI <sup>1-2</sup>	I <sup>1-3</sup>
Flawless	Internally Flawless	Very Very Slightly Included	Very Slightly Included	Slightly Included	Included

## LABORATORY GROWN DIAMOND REPORT



November 24, 2025	
IGI Report Number	LG750530209
Description	LABORATORY GROWN DIAMOND
Shape and Cutting Style	CUT CORNERED RECTANGULAR MODIFIED BRILLIANT
Measurements	16.19 X 10.66 X 6.57 MM
GRADING RESULTS	
Carat Weight	10.07 CARATS
Color Grade	F
Clarity Grade	VVS 2



### ADDITIONAL GRADING INFORMATION

Polish	EXCELLENT
Symmetry	EXCELLENT
Fluorescence	NONE
Inscription(s)	 LG750530209
<p>Comments: This Laboratory Grown Diamond was created by Chemical Vapor Deposition (CVD) growth process.</p> <p>Type IIa</p>	



© IGI 2020, International Gemological Institute

FD - 10 20

**www.igi.org**

THIS DOCUMENT WAS PRODUCED WITH THE FOLLOWING SECURITY MEASURES: SPECIAL DOCUMENT PAPER, INK SCREENS, WATERMARK, BACKGROUND DESIGNS, HOLOGRAM AND OTHER SECURITY FEATURES NOT LISTED AND DO EXCEED DOCUMENT SECURITY INDUSTRY GUIDELINE

November 24, 2025	10.07 CARATS	F
GI Report No. LG795530209	VVS 2	61.6%
GI CONFIRMED RECT. MODIFIED BRILLIANT	60%	Medium
16.19 X 10.65 X 6.57 MM	None	None
Carat Weight	Polished	EXCELLENT
Color Grade	Symmetry	EXCELLENT
Clarity Grade	Fluorescence	NONE
Depth	Inscriptions(s)	681 LG795530209
Table	Quiet	
Gable	Polish	

Comments: Laboratory Grown Diamond was created by Chemical Vapor Deposition (CVD) growth process.  
Type IIa