



**ELECTRONIC COPY**

LG750529603  
Report verification at igi.org



December 2, 2025

IGI Report Number **LG750529603**

Description **LABORATORY GROWN DIAMOND**

Shape and Cutting Style **EMERALD CUT**

Measurements **11.65 X 7.80 X 5.00 MM**

**GRADING RESULTS**

Carat Weight **4.55 CARATS**

Color Grade **FANCY INTENSE PINK**

Clarity Grade **VS 1**

December 2, 2025  
IGI Report Number **LG750529603**  
Description **LABORATORY GROWN DIAMOND**  
Shape and Cutting Style **EMERALD CUT**  
Measurements **11.65 X 7.80 X 5.00 MM**

**GRADING RESULTS**

Carat Weight **4.55 CARATS**

Color Grade **FANCY INTENSE PINK**

Clarity Grade **VS 1**

**ADDITIONAL GRADING INFORMATION**

Polish **EXCELLENT**

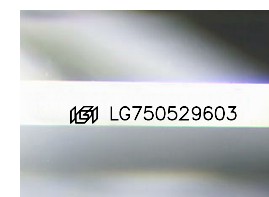
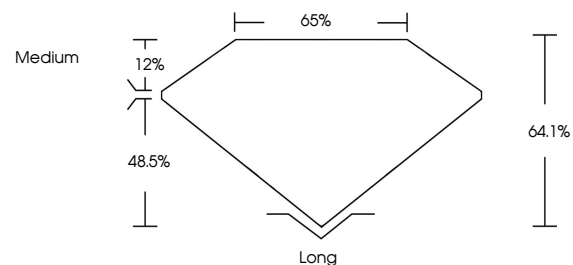
Symmetry **EXCELLENT**

Fluorescence **STRONG**

Inscription(s) **LG750529603**

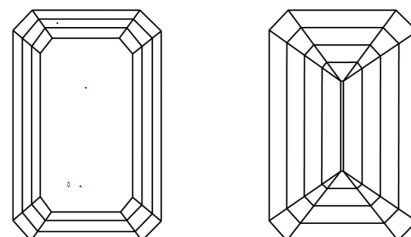
Comments: This Laboratory Grown Diamond was created by Chemical Vapor Deposition (CVD) growth process.  
Indications of post-growth treatment.

**PROPORTIONS**



Sample Image Used

**CLARITY CHARACTERISTICS**



**KEY TO SYMBOLS**

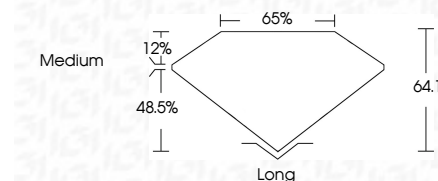
Red symbols indicate internal characteristics.  
Green symbols indicate external characteristics.

**COLOR**

D E F G H I J Faint Very Light Light

**CLARITY**

FL	IF	VS <sup>1-2</sup>	VS <sup>1-2</sup>	SI <sup>1-2</sup>	I <sup>1-3</sup>
Flawless	Internally Flawless	Very Very Slightly Included	Very Slightly Included	Slightly Included	Included



**ADDITIONAL GRADING INFORMATION**

Polish **EXCELLENT**

Symmetry **EXCELLENT**

Fluorescence **STRONG**

Inscription(s) **LG750529603**

Comments: This Laboratory Grown Diamond was created by Chemical Vapor Deposition (CVD) growth process.  
Indications of post-growth treatment.



**IGI**



December 2, 2025  
IGI Report No **LG750529603**  
**EMERALD CUT**

**4.55 CARATS**  
Carat Weight  
**FANCY INTENSE PINK**  
Color Grade

**VS 1**  
Clarity Grade

**64.1%**  
Depth

**65%**  
Table

**Medium**  
Girdle

**Long**  
Culet

**EXCELLENT**  
Polish

**EXCELLENT**  
Symmetry

**STRONG**  
Fluorescence

**LG750529603**  
Inscription(s)

Comments: This Laboratory Grown Diamond was created by Chemical Vapor Deposition (CVD) growth process.  
Indications of post-growth treatment.