



ELECTRONIC COPY

LG750523486
Report verification at igi.org



November 27, 2025
IGI Report Number **LG750523486**
Description **LABORATORY GROWN DIAMOND**
Shape and Cutting Style **ROUND ROSE CUT**
Measurements **7.84 - 8.00 X 2.04 MM**
GRADING RESULTS
Carat Weight **1.33 CARAT**
Color Grade **FANCY LIGHT BROWN**
Clarity Grade **VVS 2**

LABORATORY GROWN DIAMOND REPORT

November 27, 2025
IGI Report Number **LG750523486**
Description **LABORATORY GROWN DIAMOND**
Shape and Cutting Style **ROUND ROSE CUT**
Measurements **7.84 - 8.00 X 2.04 MM**

GRADING RESULTS

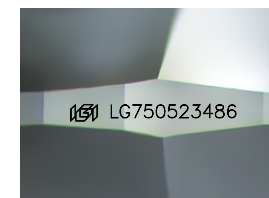
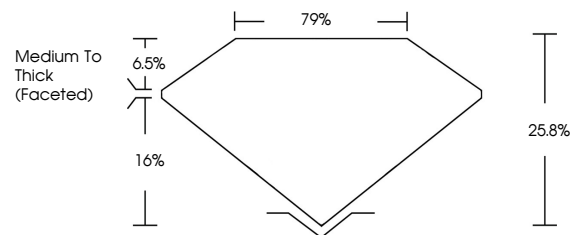
Carat Weight **1.33 CARAT**
Color Grade **FANCY LIGHT BROWN**
Clarity Grade **VVS 2**

ADDITIONAL GRADING INFORMATION

Polish **VERY GOOD**
Symmetry **VERY GOOD**
Fluorescence **NONE**
Inscription(s) **IGI LG750523486**

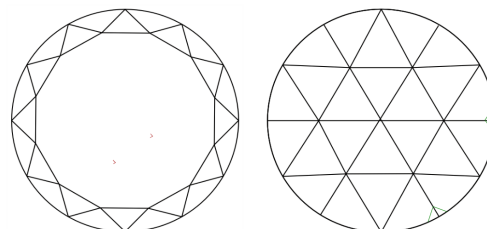
Comments: This Laboratory Grown Diamond was created by Chemical Vapor Deposition (CVD) growth process.
Indications of post-growth treatment.

PROPORTIONS



Sample Image Used

CLARITY CHARACTERISTICS



KEY TO SYMBOLS

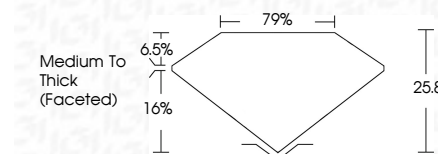
Red symbols indicate internal characteristics.
Green symbols indicate external characteristics.

COLOR

D E F G H I J Faint Very Light Light

CLARITY

FL	IF	VVS ¹⁻²	VS ¹⁻²	SI ¹⁻²	I ¹⁻³
Flawless	Internally Flawless	Very Very Slightly Included	Very Slightly Included	Slightly Included	Included



ADDITIONAL GRADING INFORMATION

Polish **VERY GOOD**
Symmetry **VERY GOOD**
Fluorescence **NONE**
Inscription(s) **IGI LG750523486**
Comments: This Laboratory Grown Diamond was created by Chemical Vapor Deposition (CVD) growth process.
Indications of post-growth treatment.



November 27, 2025
IGI Report No LG750523486
ROUND ROSE CUT
7.84 - 8.00 X 2.04 MM
1.33 CARAT
FANCY LIGHT BROWN
VVS 2
25.8%
79%
Medium To Thick (Faceted)
VERY GOOD
VERY GOOD
NONE
IGI LG750523486
Comments: This Laboratory Grown Diamond was created by Chemical Vapor Deposition (CVD) growth process.
Indications of post-growth treatment.