



**ELECTRONIC COPY**

LG750522960  
Report verification at [igi.org](http://igi.org)



November 19, 2025

IGI Report Number **LG750522960**

Description **LABORATORY GROWN DIAMOND**

Shape and Cutting Style **OLD EUROPEAN CUT**

Measurements **10.87 - 11.03 X 6.39 MM**

**GRADING RESULTS**

Carat Weight **5.02 CARATS**

Color Grade **E**

Clarity Grade **VVS 2**

November 19, 2025  
IGI Report Number **LG750522960**  
Description **LABORATORY GROWN DIAMOND**  
Shape and Cutting Style **OLD EUROPEAN CUT**  
Measurements **10.87 - 11.03 X 6.39 MM**

**GRADING RESULTS**

Carat Weight **5.02 CARATS**

Color Grade **E**

Clarity Grade **VVS 2**

**ADDITIONAL GRADING INFORMATION**

Polish **EXCELLENT**

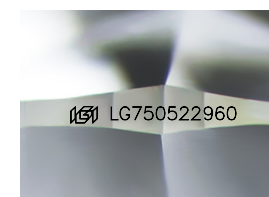
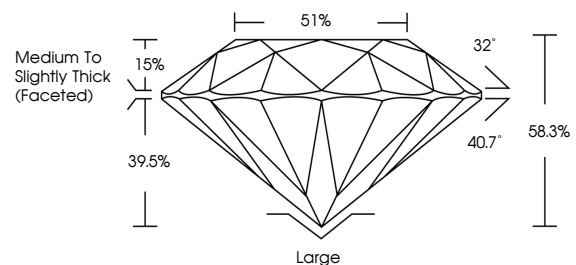
Symmetry **EXCELLENT**

Fluorescence **NONE**

Inscription(s) **IGI LG750522960**

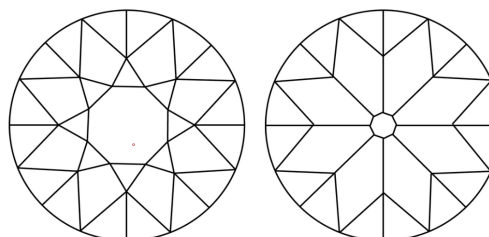
Comments: This Laboratory Grown Diamond was created by Chemical Vapor Deposition (CVD) growth process.  
Type IIa

**PROPORTIONS**



Sample Image Used

**CLARITY CHARACTERISTICS**



**KEY TO SYMBOLS**

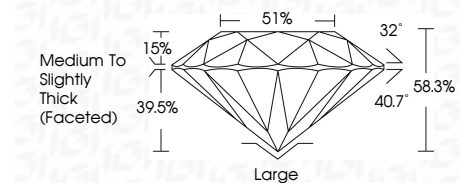
Red symbols indicate internal characteristics.  
Green symbols indicate external characteristics.

**COLOR**

D E F G H I J Faint Very Light Light

**CLARITY**

FL	IF	VVS <sup>1-2</sup>	VS <sup>1-2</sup>	SI <sup>1-2</sup>	I <sup>1-3</sup>
Flawless	Internally Flawless	Very Very Slightly Included	Very Slightly Included	Slightly Included	Included



**ADDITIONAL GRADING INFORMATION**

Polish **EXCELLENT**

Symmetry **EXCELLENT**

Fluorescence **NONE**

Inscription(s) **IGI LG750522960**

Comments: This Laboratory Grown Diamond was created by Chemical Vapor Deposition (CVD) growth process.  
Type IIa



**IGI**



November 19, 2025  
IGI Report No LG750522960  
OLD EUROPEAN CUT

10.87 - 11.03 X 6.39 MM

5.02 CARATS  
E

Carat Weight  
Color Grade  
Clarity Grade  
Depth  
Table  
Girdle

VVS 2  
E  
VVS 2  
58.3%  
51%

Medium to Slightly Thick (Faceted)

Large  
EXCELLENT  
EXCELLENT  
NONE  
IGI LG750522960

Culet  
Polish  
Symmetry  
Fluorescence  
Inscription(s)

Comments: This Laboratory Grown Diamond was created by Chemical Vapor Deposition (CVD) growth process.  
Type IIa