



**ELECTRONIC COPY**

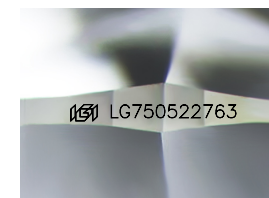
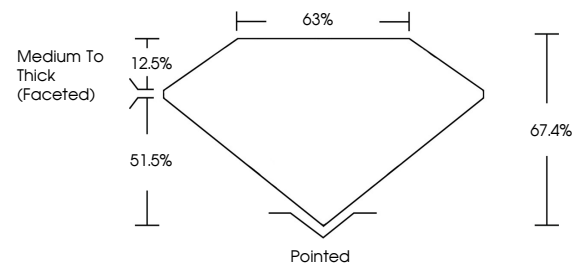
LG750522763  
Report verification at igi.org



November 20, 2025  
IGI Report Number **LG750522763**  
Description **LABORATORY GROWN DIAMOND**  
Shape and Cutting Style **CUSHION MODIFIED BRILLIANT**  
Measurements **14.66 X 10.62 X 7.16 MM**  
**GRADING RESULTS**  
Carat Weight **8.76 CARATS**  
Color Grade **E**  
Clarity Grade **VVS 2**

November 20, 2025  
IGI Report Number **LG750522763**  
Description **LABORATORY GROWN DIAMOND**  
Shape and Cutting Style **CUSHION MODIFIED BRILLIANT**  
Measurements **14.66 X 10.62 X 7.16 MM**

**PROPORTIONS**

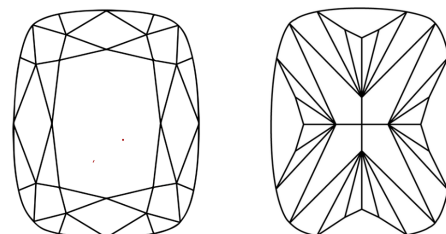


Sample Image Used

**GRADING RESULTS**

Carat Weight **8.76 CARATS**  
Color Grade **E**  
Clarity Grade **VVS 2**

**CLARITY CHARACTERISTICS**



**KEY TO SYMBOLS**

Red symbols indicate internal characteristics.  
Green symbols indicate external characteristics.

**ADDITIONAL GRADING INFORMATION**

Polish **EXCELLENT**  
Symmetry **EXCELLENT**  
Fluorescence **NONE**  
Inscription(s) **IGI LG750522763**

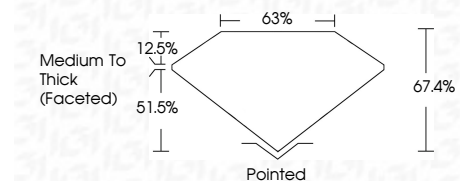
Comments: This Laboratory Grown Diamond was created by Chemical Vapor Deposition (CVD) growth process. Type IIa

**COLOR**

D E F G H I J Faint Very Light Light

**CLARITY**

FL	IF	VVS <sup>1-2</sup>	VS <sup>1-2</sup>	SI <sup>1-2</sup>	I <sup>1-3</sup>
Flawless	Internally Flawless	Very Very Slightly Included	Very Slightly Included	Slightly Included	Included



**ADDITIONAL GRADING INFORMATION**

Polish **EXCELLENT**  
Symmetry **EXCELLENT**  
Fluorescence **NONE**  
Inscription(s) **IGI LG750522763**  
Comments: This Laboratory Grown Diamond was created by Chemical Vapor Deposition (CVD) growth process. Type IIa



**IGI**



November 20, 2025  
IGI Report No LG750522763  
CUSHION MODIFIED BRILLIANT  
14.66 X 10.62 X 7.16 MM  
8.76 CARATS  
E  
VVS 2  
67.4%  
63%  
Medium To Thick (Faceted)  
Pointed  
EXCELLENT  
EXCELLENT  
NONE  
IGI LG750522763  
Comments: This Laboratory Grown Diamond was created by Chemical Vapor Deposition (CVD) growth process. Type IIa