



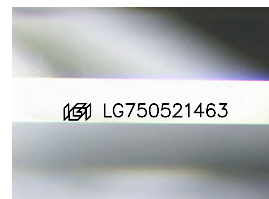
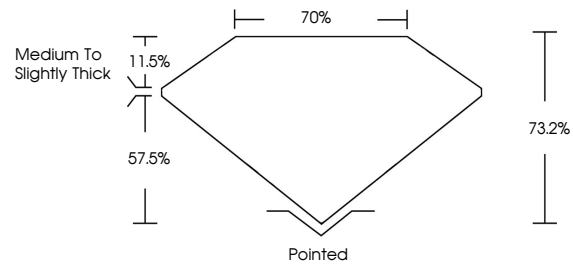
**INTERNATIONAL
GEMOLOGICAL
INSTITUTE**

ELECTRONIC COPY

LABORATORY GROWN DIAMOND REPORT

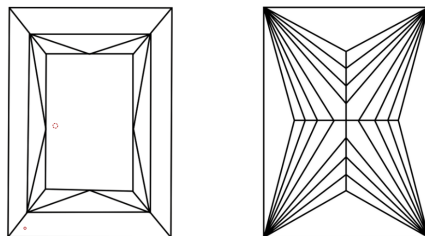
LG750521463
Report verification at igi.org

PROPORTIONS



Sample Image Used

CLARITY CHARACTERISTICS



KEY TO SYMBOLS

Red symbols indicate internal characteristics.
Green symbols indicate external characteristics.

COLOR

D E F G H I J Faint Very Light Light

CLARITY

FL	IF	VVS ¹⁻²	VS ¹⁻²	SI ¹⁻²	I ¹⁻³
Flawless	Internally Flawless	Very Very Slightly Included	Very Slightly Included	Slightly Included	Included

LABORATORY GROWN DIAMOND REPORT



November 19, 2025

IGI Report Number **LG750521463**

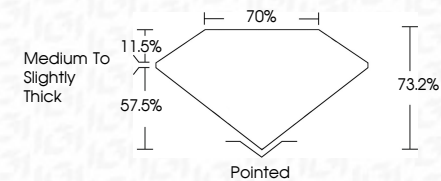
Description	LABORATORY GROWN DIAMOND
-------------	--------------------------

Shape and Cutting Style **RECTANGULAR MODIFIED PRINCESS**

Measurements 7.02 X 6.23 X 4.56 MM

GRADING RESULTS

Carat Weight **1.75 CARAT**

Color Grade EClarity Grade **VVS 2**

ADDITIONAL GRADING INFORMATION

Polish **EXCELLENT**Symmetry **EXCELLENT**

Fluorescence NONI

Inscription(s) LG750521463

Comments: This Laboratory Grown Diamond was created by Chemical Vapor Deposition (CVD) growth process.
Type IIa



IG



© IGI 2020, International Gemological Institute

FD - 10 20

www.igi.org

THIS DOCUMENT WAS PRODUCED WITH THE FOLLOWING SECURITY MEASURES: SPECIAL DOCUMENT PAPER, INK SCREENS, WATERMARK, BACKGROUND DESIGNS, HOLOGRAM AND OTHER SECURITY FEATURES NOT LISTED AND DO EXCEED DOCUMENT SECURITY INDUSTRY GUIDELINES

November 19, 2025	1.75 CARAT
IGI Report No. IGI705921463	E
IGI ANALYSIS MODIFIED PRINCESS	VS 2
	73.2%
	70%
	Medium To Slightly Thick
	Polished
	EXCELLENT
	EXCELLENT
	NONE
	6811G705921463
0.02 X 4.23 X 4.56 MM	
Carat Weight	
Color Grade	
Clarity Grade	
Depth	
Table	
Girdle	
Culet	
Polish	
Symmetry	
Fluorescence	
Inscription(s)	
Comments:	
The Laboratory Grown Diamond was created by Chemical Vapor Deposition growth process.	
Type I _c	