



November 18, 2025

IGI Report Number LG750513643
**CUT CORNERED SQUARE
MODIFIED BRILLIANT
LABORATORY GROWN DIAMOND**
4.55 X 4.54 X 3.03 MM

Carat Weight 0.55 CARAT
Color Grade D
Clarity Grade VVS 2
Polish VERY GOOD
Symmetry VERY GOOD
Fluorescence NONE
Inscription(s) IGI LG750513643

Comments: As Grown - No indication of post-growth treatment. This Laboratory Grown Diamond was created by High Pressure High Temperature (HPHT) growth process. Type II

LABORATORY GROWN DIAMOND REPORT

November 18, 2025

IGI Report Number **LG750513643**

Description **LABORATORY GROWN DIAMOND**
Shape and Cutting Style **CUT CORNERED SQUARE MODIFIED
BRILLIANT**

Measurements **4.55 X 4.54 X 3.03 MM**

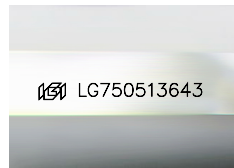
GRADING RESULTS

Carat Weight 0.55 CARAT
Color Grade D
Clarity Grade VVS 2

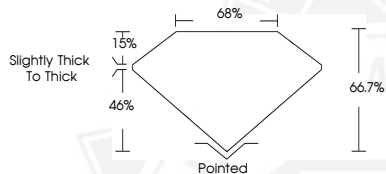
ADDITIONAL GRADING INFORMATION

Polish VERY GOOD
Symmetry VERY GOOD
Fluorescence NONE
Inscription(s) IGI LG750513643

Comments: As Grown - No indication of post-growth treatment. This Laboratory Grown Diamond was created by High Pressure High Temperature (HPHT) growth process. Type II



Sample Image Used



November 18, 2025

IGI Report Number LG750513643
**CUT CORNERED SQUARE MODIFIED
BRILLIANT
LABORATORY GROWN DIAMOND**
4.55 X 4.54 X 3.03 MM

Carat Weight 0.55 CARAT
Color Grade D
Clarity Grade VVS 2
Polish VERY GOOD
Symmetry VERY GOOD
Fluorescence NONE
Inscription(s) IGI LG750513643

Comments: As Grown - No indication of post-growth treatment. This Laboratory Grown Diamond was created by High Pressure High Temperature (HPHT) growth process. Type II



THIS DOCUMENT WAS PRODUCED WITH THE FOLLOWING SECURITY MEASURES: SPECIAL DOCUMENT PAPER, INK SCREENS, WATERMARK, BACKGROUND DESIGNS, HOLOGRAM AND OTHER SECURITY FEATURES NOT LISTED AND DO EXCEED DOCUMENT SECURITY INDUSTRY GUIDELINES.