



ELECTRONIC COPY

LG750511064
Report verification at igi.org



November 22, 2025

IGI Report Number **LG750511064**

Description **LABORATORY GROWN DIAMOND**

Shape and Cutting Style **PEAR BRILLIANT**

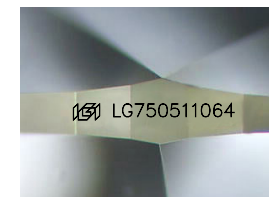
Measurements **10.45 X 6.47 X 4.01 MM**

GRADING RESULTS

Carat Weight **1.56 CARAT**

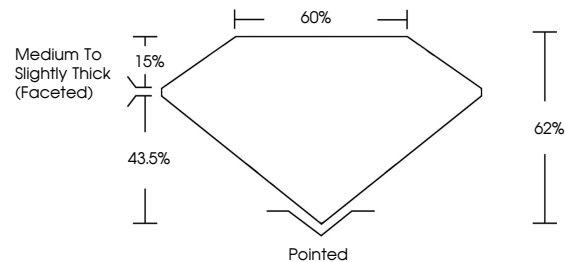
Color Grade **D**

Clarity Grade **VS 1**

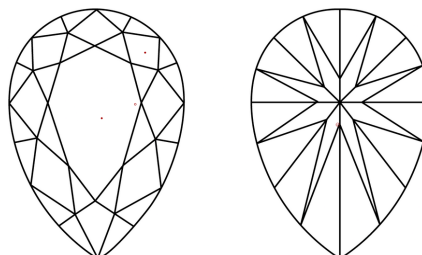


Sample Image Used

PROPORTIONS



CLARITY CHARACTERISTICS



KEY TO SYMBOLS

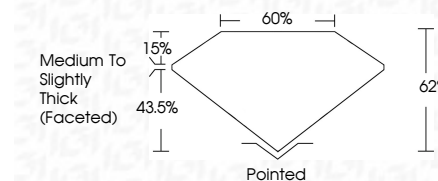
Red symbols indicate internal characteristics.
Green symbols indicate external characteristics.

COLOR

D E F G H I J Faint Very Light Light

CLARITY

FL	IF	VS ¹⁻²	VS ¹⁻²	SI ¹⁻²	I ¹⁻³
Flawless	Internally Flawless	Very Very Slightly Included	Very Slightly Included	Slightly Included	Included



ADDITIONAL GRADING INFORMATION

Polish **EXCELLENT**

Symmetry **EXCELLENT**

Fluorescence **NONE**

Inscription(s) **IGI LG750511064**

Comments: This Laboratory Grown Diamond was created by Chemical Vapor Deposition (CVD) growth process. Type IIa



IGI



November 22, 2025
IGI Report No LG750511064
PEAR BRILLIANT

1.56 CARAT
D

10.45 X 6.47 X 4.01 MM

Color Grade
Clarity Grade
Table
Girdle
Medium to Slightly Thick (Faceted)

VS 1
62%
60%

Pointed
EXCELLENT
EXCELLENT
NONE
IGI LG750511064

Comments: This Laboratory Grown Diamond was created by Chemical Vapor Deposition (CVD) growth process. Type IIa