



INTERNATIONAL GEMOLOGICAL INSTITUTE

ELECTRONIC COPY

LABORATORY GROWN DIAMOND REPORT

December 5, 2025
IGI Report Number **LG750508078**
Description **LABORATORY GROWN DIAMOND**
Shape and Cutting Style **OVAL BRILLIANT**
Measurements **7.01 X 5.08 X 3.29 MM**

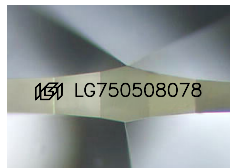
GRADING RESULTS

Carat Weight **0.75 CARAT**
Color Grade **E**
Clarity Grade **VS 1**

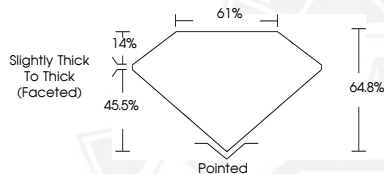
ADDITIONAL GRADING INFORMATION

Polish **VERY GOOD**
Symmetry **FAIR**
Fluorescence **NONE**
Inscription(s) **IGI LG750508078**

Comments: As Grown - No indication of post-growth treatment.
This Laboratory Grown Diamond was created by High Pressure High Temperature (HPHT) growth process.
Type II



Sample Image Used



December 5, 2025
IGI Report Number **LG750508078**
OVAL BRILLIANT
LABORATORY GROWN DIAMOND
7.01 X 5.08 X 3.29 MM
Carat Weight **0.75 CARAT**
Color Grade **E**
Clarity Grade **VS 1**
Polish **VERY GOOD**
Symmetry **FAIR**
Fluorescence **NONE**
Inscription(s) **IGI LG750508078**

Comments: As Grown - No indication of post-growth treatment. This Laboratory Grown Diamond was created by High Pressure High Temperature (HPHT) growth process. Type II



December 5, 2025
IGI Report Number **LG750508078**
OVAL BRILLIANT
LABORATORY GROWN DIAMOND
7.01 X 5.08 X 3.29 MM
Carat Weight **0.75 CARAT**
Color Grade **E**
Clarity Grade **VS 1**
Polish **VERY GOOD**
Symmetry **FAIR**
Fluorescence **NONE**
Inscription(s) **IGI LG750508078**

Comments: As Grown - No indication of post-growth treatment. This Laboratory Grown Diamond was created by High Pressure High Temperature (HPHT) growth process. Type II



THIS DOCUMENT WAS PRODUCED WITH THE FOLLOWING SECURITY MEASURES: SPECIAL DOCUMENT PAPER, INK SCREENS, WATERMARK, BACKGROUND DESIGNS, HOLOGRAM AND OTHER SECURITY FEATURES NOT LISTED AND DO EXCEED DOCUMENT SECURITY INDUSTRY GUIDELINES.

For terms & conditions and to verify this report, please visit www.igi.org