



# INTERNATIONAL GEMOLOGICAL INSTITUTE

ELECTRONIC COPY

## LABORATORY GROWN DIAMOND REPORT

December 4, 2025  
 IGI Report Number **LG750507872**  
 Description **LABORATORY GROWN DIAMOND**  
 Shape and Cutting Style **ROUND BRILLIANT**  
 Measurements **6.14 - 6.16 X 3.75 MM**

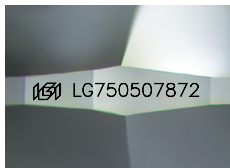
### GRADING RESULTS

Carat Weight **0.86 CARAT**  
 Color Grade **F**  
 Clarity Grade **VS 1**  
 Cut Grade **IDEAL**

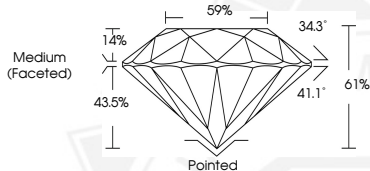
### ADDITIONAL GRADING INFORMATION

Polish **EXCELLENT**  
 Symmetry **EXCELLENT**  
 Fluorescence **NONE**  
 Inscription(s) **IGI LG750507872**

Comments: HEARTS & ARROWS  
 This Laboratory Grown Diamond was created by Chemical Vapor Deposition (CVD) growth process.  
 Type Ila



Sample Image Used



HEARTS & ARROWS



December 4, 2025  
 IGI Report Number **LG750507872**  
 ROUND BRILLIANT  
 LABORATORY GROWN DIAMOND  
 6.14 - 6.16 X 3.75 MM  
 Carat Weight **0.86 CARAT**  
 Color Grade **F**  
 Clarity Grade **VS 1**  
 Cut Grade **IDEAL**  
 Polish **EXCELLENT**  
 Symmetry **EXCELLENT**  
 Fluorescence **NONE**  
 Inscription(s) **IGI LG750507872**

Comments: HEARTS & ARROWS THIS Laboratory Grown Diamond was created by Chemical Vapor Deposition (CVD) growth process.  
 Type Ila



December 4, 2025  
 IGI Report Number **LG750507872**  
 ROUND BRILLIANT  
 LABORATORY GROWN DIAMOND  
 6.14 - 6.16 X 3.75 MM  
 Carat Weight **0.86 CARAT**  
 Color Grade **F**  
 Clarity Grade **VS 1**  
 Cut Grade **IDEAL**  
 Polish **EXCELLENT**  
 Symmetry **EXCELLENT**  
 Fluorescence **NONE**  
 Inscription(s) **IGI LG750507872**

Comments: HEARTS & ARROWS THIS Laboratory Grown Diamond was created by Chemical Vapor Deposition (CVD) growth process.  
 Type Ila

THIS DOCUMENT WAS PRODUCED WITH THE FOLLOWING SECURITY MEASURES: SPECIAL DOCUMENT PAPER, INK SCREENS, WATERMARK, BACKGROUND DESIGNS, HOLOGRAM AND OTHER SECURITY FEATURES NOT LISTED AND DO EXCEED DOCUMENT SECURITY INDUSTRY GUIDELINES.

For terms & conditions and to verify this report, please visit [www.igi.org](http://www.igi.org)