



INTERNATIONAL GEMOLOGICAL INSTITUTE

LABORATORY GROWN DIAMOND REPORT

November 28, 2025

IGI Report Number

LG750507757

Description

LABORATORY GROWN DIAMOND

Shape and Cutting Style

PRINCESS CUT

Measurements

4.59 X 4.51 X 3.30 MM

GRADING RESULTS

Carat Weight

0.60 CARAT

Color Grade

FANCY VIVID GREEN

Clarity Grade

SI 1

ADDITIONAL GRADING INFORMATION

Polish

VERY GOOD

Symmetry

VERY GOOD

Fluorescence

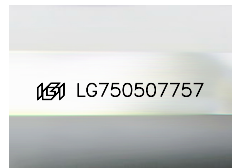
NONE

Inscription(s)

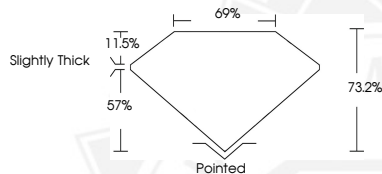
IGI LG750507757

Comments: This Laboratory Grown Diamond was created by Chemical Vapor Deposition (CVD) growth process. Indications of post-growth treatment.

ELECTRONIC COPY



Sample Image Used



November 28, 2025

IGI Report Number LG750507757

PRINCESS CUT

LABORATORY GROWN DIAMOND

4.59 X 4.51 X 3.30 MM

Carat Weight 0.60 CARAT

Color Grade FANCY VIVID GREEN

Clarity Grade SI 1

Polish VERY GOOD

Symmetry VERY GOOD

Fluorescence NONE

Inscription(s) IGI LG750507757

Comments: This Laboratory Grown Diamond was created by Chemical Vapor Deposition (CVD) growth process. Indications of post-growth treatment.



November 28, 2025

IGI Report Number LG750507757

PRINCESS CUT

LABORATORY GROWN DIAMOND

4.59 X 4.51 X 3.30 MM

Carat Weight 0.60 CARAT

Color Grade FANCY VIVID GREEN

Clarity Grade SI 1

Polish VERY GOOD

Symmetry VERY GOOD

Fluorescence NONE

Inscription(s) IGI LG750507757

Comments: This Laboratory Grown Diamond was created by Chemical Vapor Deposition (CVD) growth process. Indications of post-growth treatment.



THIS DOCUMENT WAS PRODUCED WITH THE FOLLOWING SECURITY MEASURES: SPECIAL DOCUMENT PAPER, INK SCREENS, WATERMARK, BACKGROUND DESIGNS, HOLOGRAM AND OTHER SECURITY FEATURES NOT LISTED AND DO EXCEED DOCUMENT SECURITY INDUSTRY GUIDELINES.

For terms & conditions and to verify this report, please visit www.igi.org