



# INTERNATIONAL GEMOLOGICAL INSTITUTE

ELECTRONIC COPY

## LABORATORY GROWN DIAMOND REPORT

November 21, 2025

IGI Report Number

LG750507417

Description

LABORATORY GROWN DIAMOND

Shape and Cutting Style

ROUND BRILLIANT

Measurements

5.02 - 5.05 X 3.17 MM

### GRADING RESULTS

Carat Weight

0.51 CARAT

Color Grade

D

Clarity Grade

VS 2

Cut Grade

VERY GOOD

### ADDITIONAL GRADING INFORMATION

Polish

GOOD

Symmetry

GOOD

Fluorescence

NONE

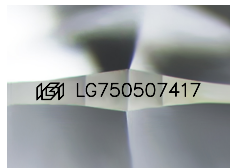
Inscription(s)

IGI LG750507417

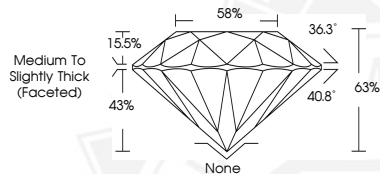
Comments: As Grown - No indication of post-growth treatment.

This Laboratory Grown Diamond was created by High Pressure High Temperature (HPHT) growth process.

Type II



Sample Image Used



November 21, 2025

IGI Report Number LG750507417

ROUND BRILLIANT

LABORATORY GROWN DIAMOND

5.02 - 5.05 X 3.17 MM

Carat Weight 0.51 CARAT

Color Grade D

Clarity Grade VS 2

Cut Grade VERY GOOD

Polish GOOD

Symmetry GOOD

Fluorescence NONE

Inscription(s) IGI LG750507417

Comments: As Grown - No indication of post-growth treatment. This Laboratory Grown Diamond was created by High Pressure High Temperature (HPHT) growth process. Type II



November 21, 2025

IGI Report Number LG750507417

ROUND BRILLIANT

LABORATORY GROWN DIAMOND

5.02 - 5.05 X 3.17 MM

Carat Weight 0.51 CARAT

Color Grade D

Clarity Grade VS 2

Cut Grade VERY GOOD

Polish GOOD

Symmetry GOOD

Fluorescence NONE

Inscription(s) IGI LG750507417

Comments: As Grown - No indication of post-growth treatment. This Laboratory Grown Diamond was created by High Pressure High Temperature (HPHT) growth process. Type II



THIS DOCUMENT WAS PRODUCED WITH THE FOLLOWING SECURITY MEASURES: SPECIAL DOCUMENT PAPER, INK SCREENS, WATERMARK, BACKGROUND DESIGNS, HOLOGRAM AND OTHER SECURITY FEATURES NOT LISTED AND DO EXCEED DOCUMENT SECURITY INDUSTRY GUIDELINES.

For terms & conditions and to verify this report, please visit [www.igi.org](http://www.igi.org)