



ELECTRONIC COPY

LABORATORY GROWN DIAMOND REPORT

November 20, 2025  
IGI Report Number LG750506230  
Description LABORATORY GROWN DIAMOND  
Shape and Cutting Style CUT CORNERED RECTANGULAR MODIFIED BRILLIANT  
Measurements 7.19 X 4.88 X 3.38 MM

GRADING RESULTS

Carat Weight 1.08 CARAT  
Color Grade FANCY YELLOW  
Clarity Grade VS 1

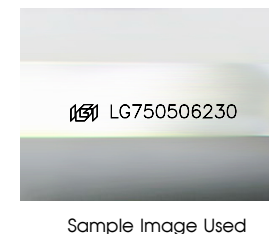
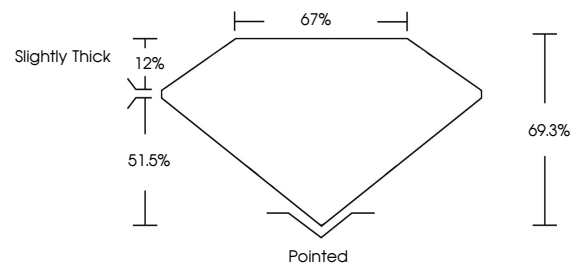
ADDITIONAL GRADING INFORMATION

Polish EXCELLENT  
Symmetry VERY GOOD  
Fluorescence NONE

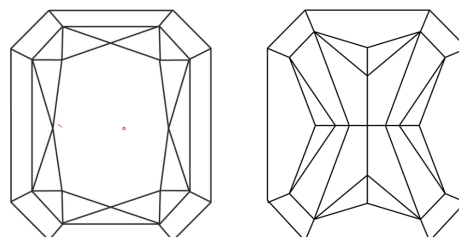
Inscription(s) IGI LG750506230

Comments: This Laboratory Grown Diamond was created by Chemical Vapor Deposition (CVD) growth process.

PROPORTIONS



CLARITY CHARACTERISTICS



KEY TO SYMBOLS

Red symbols indicate internal characteristics.  
Green symbols indicate external characteristics.

COLOR

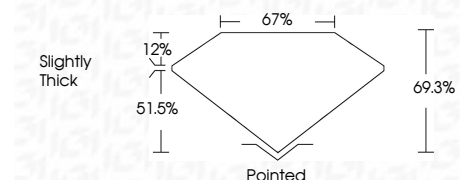
D E F G H I J Faint Very Light Light

CLARITY

FL IF VS 1-2 VS 2-3 SI 1-2 I 1-3  
Flawless Internally Flawless Very Very Slightly Included Very Slightly Included Slightly Included Included



November 20, 2025  
IGI Report Number LG750506230  
Description LABORATORY GROWN DIAMOND  
Shape and Cutting Style CUT CORNERED RECTANGULAR MODIFIED BRILLIANT  
Measurements 7.19 X 4.88 X 3.38 MM  
GRADING RESULTS  
Carat Weight 1.08 CARAT  
Color Grade FANCY YELLOW  
Clarity Grade VS 1



ADDITIONAL GRADING INFORMATION

Polish EXCELLENT  
Symmetry VERY GOOD  
Fluorescence NONE  
Inscription(s) IGI LG750506230

Comments: This Laboratory Grown Diamond was created by Chemical Vapor Deposition (CVD) growth process.



November 20, 2025  
IGI Report No LG750506230  
CUT CORNERED RECT. MODIFIED BRILLIANT  
7.19 X 4.88 X 3.38 MM  
1.08 CARAT  
FANCY YELLOW  
VS 1  
69.3%  
67%  
Slightly Thick  
Pointed  
EXCELLENT  
VERY GOOD  
NONE  
IGI LG750506230  
Comments: This Laboratory Grown Diamond was created by Chemical Vapor Deposition (CVD) growth process.