



ELECTRONIC COPY

LG750503500
Report verification at igi.org



November 19, 2025
IGI Report Number **LG750503500**
Description **LABORATORY GROWN DIAMOND**
Shape and Cutting Style **ROUND BRILLIANT**
Measurements **9.23 - 9.27 X 5.65 MM**
GRADING RESULTS
Carat Weight **3.02 CARATS**
Color Grade **G**
Clarity Grade **VS 1**
Cut Grade **EXCELLENT**

November 19, 2025
IGI Report Number **LG750503500**
Description **LABORATORY GROWN DIAMOND**
Shape and Cutting Style **ROUND BRILLIANT**
Measurements **9.23 - 9.27 X 5.65 MM**

GRADING RESULTS

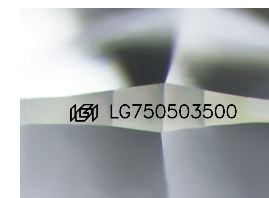
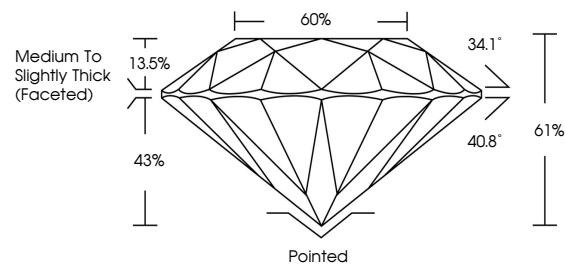
Carat Weight **3.02 CARATS**
Color Grade **G**
Clarity Grade **VS 1**
Cut Grade **EXCELLENT**

ADDITIONAL GRADING INFORMATION

Polish **EXCELLENT**
Symmetry **EXCELLENT**
Fluorescence **NONE**
Inscription(s) **IGI LG750503500**

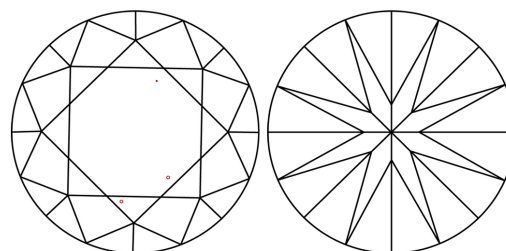
Comments: This Laboratory Grown Diamond was created by Chemical Vapor Deposition (CVD) growth process.
Type IIa

PROPORTIONS



Sample Image Used

CLARITY CHARACTERISTICS



KEY TO SYMBOLS

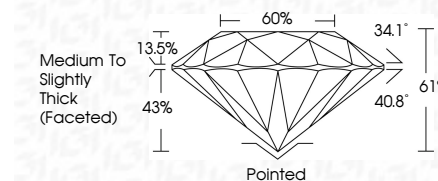
Red symbols indicate internal characteristics.
Green symbols indicate external characteristics.

COLOR

D E F G H I J Faint Very Light Light

CLARITY

FL	IF	VS ¹⁻²	VS ¹⁻²	SI ¹⁻²	I ¹⁻³
Flawless	Internally Flawless	Very Very Slightly Included	Very Slightly Included	Slightly Included	Included



ADDITIONAL GRADING INFORMATION

Polish **EXCELLENT**
Symmetry **EXCELLENT**
Fluorescence **NONE**
Inscription(s) **IGI LG750503500**
Comments: This Laboratory Grown Diamond was created by Chemical Vapor Deposition (CVD) growth process.
Type IIa



IGI



November 19, 2025
IGI Report No LG750503500
ROUND BRILLIANT
9.23 - 9.27 X 5.65 MM
3.02 CARATS
G
VS 1
EXCELLENT
61%
66%
Medium To Slightly Thick (Faceted)
Pointed
EXCELLENT
EXCELLENT
NONE
IGI LG750503500
Comments: This Laboratory Grown Diamond was created by Chemical Vapor Deposition (CVD) growth process.
Type IIa