

ELECTRONIC COPY

LABORATORY GROWN DIAMOND REPORT

November 18, 2025	
IGI Report Number	LG749592453
Description	LABORATORY GROWN DIAMOND
Shape and Cutting Style	CUT CORNERED RECTANGULAR MODIFIED BRILLIANT
Measurements	10.29 X 7.16 X 4.88 MM

GRADING RESULTS

Carat Weight	3.07 CARATS
Color Grade	F
Clarity Grade	VS 2

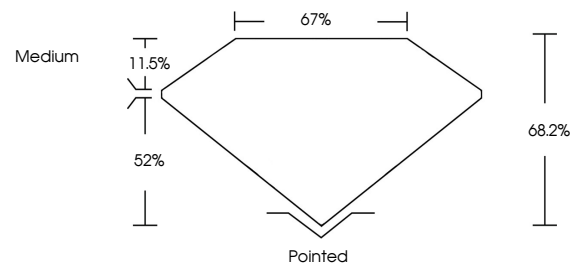
ADDITIONAL GRADING INFORMATION

Polish	EXCELLENT
Symmetry	EXCELLENT
Fluorescence	NONE
Inscription(s)	 LG749592453

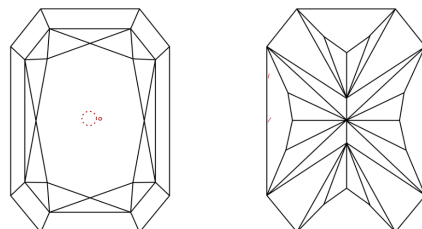
Comments: This Laboratory Grown Diamond was created by Chemical Vapor Deposition (CVD) growth process.
Type IIa

LG749592453
Report verification at igi.org

PROPORTIONS

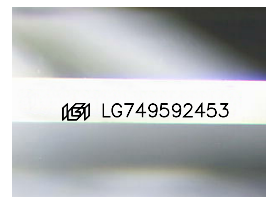


CLARITY CHARACTERISTICS



KEY TO SYMBOLS

Red symbols indicate internal characteristics.
Green symbols indicate external characteristics.



Sample Image Used

COLOR

D E F G H I J Faint Very Light Light

CLARITY

FL	IF	VVS ¹⁻²	VS ¹⁻²	SI ¹⁻²	I ¹⁻³
Flawless	Internally Flawless	Very Very Slightly Included	Very Slightly Included	Slightly Included	Included

LABORATORY GROWN DIAMOND REPORT



November 18, 2025	
IGI Report Number	LG749592453
Description	LABORATORY GROWN DIAMOND
Shape and Cutting Style	CUT CORNERED RECTANGULAR MODIFIED BRILLIANT

Measurements **10.29 X 7.16 X 4.88 MM**

GRADING RESULTS

Carat Weight	3.07 CARATS
Color Grade	F
Clarity Grade	VS 2

ADDITIONAL GRADING INFORMATION

Polish	EXCELLENT
Symmetry	EXCELLENT
Fluorescence	NONE
Inscription(s)	 LG749592453

Comments: This Laboratory Grown Diamond was created by Chemical Vapor Deposition (CVD) growth process.
Type IIa



© IGI 2020, International Gemological Institute

FD - 10 20

November 18, 2025	GI Report No LG74692463	GI CUT CORNERED RECT. MODIFIED BRILLIANT
10.029 X 7.116 X 4.881 MM	Color Weight	3.07 CARATS
	Color Grade	Vs2
	Clarity Grade	6s2
	Depth	67%
	Table	Medium
	Girdle	
	Culet	Pointed
	Pash	EXCELLENT
	Symmetry	EXCELLENT
	Fluorescence	NONE
	Inscriptions(s)	1881 LG74692463

Comments: Very Fine, Green Diamond was created by Chemical Vapor Deposition (CVD) growth process.

Type IIa