



**ELECTRONIC COPY**

LG749592239  
Report verification at igi.org



November 20, 2025  
IGI Report Number **LG749592239**  
Description **LABORATORY GROWN DIAMOND**  
Shape and Cutting Style **CUSHION MODIFIED BRILLIANT**  
Measurements **14.30 X 10.40 X 6.87 MM**  
**GRADING RESULTS**  
Carat Weight **8.07 CARATS**  
Color Grade **E**  
Clarity Grade **VVS 2**

**LABORATORY GROWN DIAMOND REPORT**

November 20, 2025  
IGI Report Number **LG749592239**  
Description **LABORATORY GROWN DIAMOND**  
Shape and Cutting Style **CUSHION MODIFIED BRILLIANT**  
Measurements **14.30 X 10.40 X 6.87 MM**

**GRADING RESULTS**

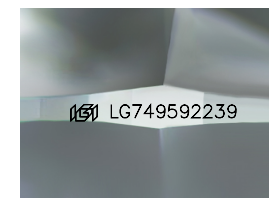
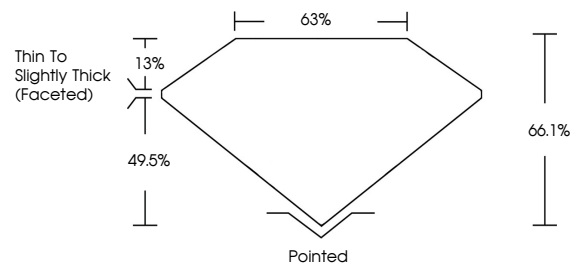
Carat Weight **8.07 CARATS**  
Color Grade **E**  
Clarity Grade **VVS 2**

**ADDITIONAL GRADING INFORMATION**

Polish **EXCELLENT**  
Symmetry **EXCELLENT**  
Fluorescence **NONE**  
Inscription(s) **IGI LG749592239**

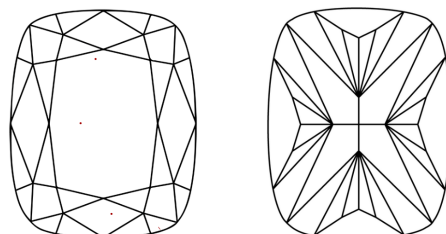
Comments: This Laboratory Grown Diamond was created by Chemical Vapor Deposition (CVD) growth process.  
Type IIa

**PROPORTIONS**



Sample Image Used

**CLARITY CHARACTERISTICS**



**KEY TO SYMBOLS**

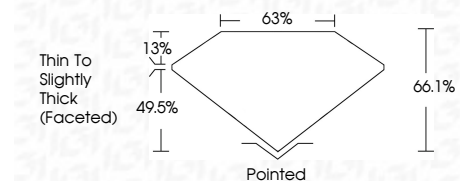
Red symbols indicate internal characteristics.  
Green symbols indicate external characteristics.

**COLOR**

D E F G H I J Faint Very Light Light

**CLARITY**

FL	IF	VVS <sup>1-2</sup>	VS <sup>1-2</sup>	SI <sup>1-2</sup>	I <sup>1-3</sup>
Flawless	Internally Flawless	Very Very Slightly Included	Very Slightly Included	Slightly Included	Included



**ADDITIONAL GRADING INFORMATION**

Polish **EXCELLENT**  
Symmetry **EXCELLENT**  
Fluorescence **NONE**  
Inscription(s) **IGI LG749592239**  
Comments: This Laboratory Grown Diamond was created by Chemical Vapor Deposition (CVD) growth process.  
Type IIa



November 20, 2025  
IGI Report No LG749592239  
**CUSHION MODIFIED BRILLIANT**  
**14.30 X 10.40 X 6.87 MM**  
**8.07 CARATS**  
**E**  
**VVS 2**  
**66.1%**  
**63%**  
**Thin To Slightly Thick (Faceted)**  
**Pointed**  
**EXCELLENT**  
**EXCELLENT**  
**NONE**  
**IGI LG749592239**

Comments: This Laboratory Grown Diamond was created by Chemical Vapor Deposition (CVD) growth process.  
Type IIa