



**ELECTRONIC COPY**

## LABORATORY GROWN DIAMOND REPORT

November 18, 2025	
IGI Report Number	LG749592187
Description	LABORATORY GROWN DIAMOND
Shape and Cutting Style	ROUND BRILLIANT
Measurements	9.29 - 9.32 X 5.67 MM

## GRADING RESULTS

Carat Weight	3.02 CARATS
Color Grade	E
Clarity Grade	VS 1
Cut Grade	IDEAL

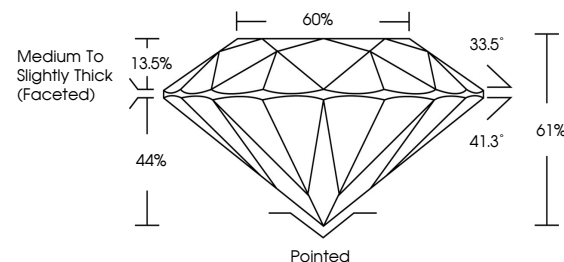
### ADDITIONAL GRADING INFORMATION

Polish	EXCELLENT
Symmetry	EXCELLENT
Fluorescence	NONE
Inscription(s)	15 LG749592187

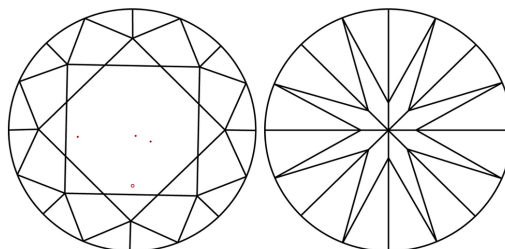
Comments: This Laboratory Grown Diamond was created by Chemical Vapor Deposition (CVD) growth process.  
Type IIa

LG749592187  
Report verification at [lgi.org](https://lgi.org)

## PROPORTIONS

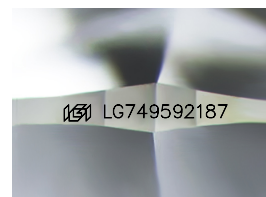


## CLARITY CHARACTERISTICS



### KEY TO SYMBOLS

Red symbols indicate internal characteristics.  
Green symbols indicate external characteristics.



Sample Image Used

## COLOR

D E F G H I J      Faint      Very Light      Light

## CLARITY

FL	IF	VVS <sup>1-2</sup>	VS <sup>1-2</sup>	SI <sup>1-2</sup>	I <sup>1-3</sup>
Flawless	Internally Flawless	Very Very Slightly Included	Very Slightly Included	Slightly Included	Included

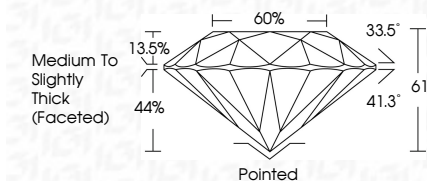
## LABORATORY GROWN DIAMOND REPORT



November 18, 2025	
IGI Report Number	LG749592187
Description	LABORATORY GROWN DIAMOND
Shape and Cutting Style	ROUND BRILLIANT
Measurements	9.29 - 9.32 X 5.67 MM

## GRADING RESULTS

Carat Weight	3.02 CARATS
Color Grade	E
Clarity Grade	VS 1
Cut Grade	IDEAL



### ADDITIONAL GRADING INFORMATION

Polish	EXCELLENT
Symmetry	EXCELLENT
Fluorescence	NONE
Inscription(s)	 LG749592187
<p>Comments: This Laboratory Grown Diamond was created by Chemical Vapor Deposition (CVD) growth process.</p> <p>Type IIa</p>	



© IGI 2020, International Gemological Institute

FD - 10 20



THIS DOCUMENT WAS PRODUCED WITH THE FOLLOWING SECURITY MEASURES: SPECIAL DOCUMENT PAPER, INK SCREENS, WATERMARK, BACKGROUND DESIGNS, HOLOGRAM AND OTHER SECURITY FEATURES NOT LISTED AND DO EXCEED DOCUMENT SECURITY INDUSTRY GUIDELINE

**www.igi.org**

November 18, 2025  
GI Report No LG749592187  
ROUND BRILLIANT

2.29 - 9.32 X 5.67 MM	Carat Weight	3.02 CARATS
	Color Grade	E
	Clarity Grade	VS 1
	Cut Grade	IDEAL
	Depth	61%
	Table	60%
	Girdle	Medium to Slightly Thick (Faceted)
	Culet	Pointed
	Polish	EXCELLENT
	Symmetry	EXCELLENT
	Fluorescence	NONE

**Comments:**  
This Laboratory Grown Diamond was  
created by Chemical Vapor Deposition  
(CVD) growth process.