



**ELECTRONIC COPY**

**LABORATORY GROWN DIAMOND REPORT**

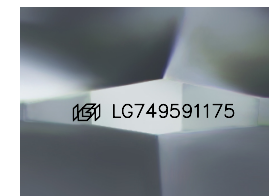
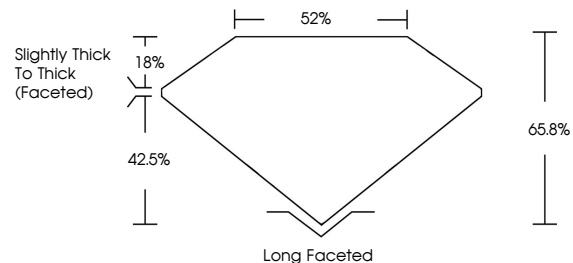
November 18, 2025  
 IGI Report Number **LG749591175**  
 Description **LABORATORY GROWN DIAMOND**  
 Shape and Cutting Style **CUSHION MODIFIED BRILLIANT**  
 Measurements **9.66 X 7.55 X 4.97 MM**  
**GRADING RESULTS**  
 Carat Weight **2.72 CARATS**  
 Color Grade **F**  
 Clarity Grade **VVS 2**

**ADDITIONAL GRADING INFORMATION**

Polish **EXCELLENT**  
 Symmetry **EXCELLENT**  
 Fluorescence **NONE**  
 Inscription(s) **IGI LG749591175**

Comments: This Laboratory Grown Diamond was created by Chemical Vapor Deposition (CVD) growth process. Type IIa

**PROPORTIONS**



Sample Image Used

**COLOR**

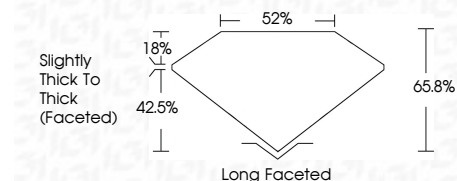
D E F G H I J Faint Very Light Light

**CLARITY**

FL	IF	VS <sup>1-2</sup>	VS <sup>1-2</sup>	SI <sup>1-2</sup>	I <sup>1-3</sup>
Flawless	Internally Flawless	Very Very Slightly Included	Very Slightly Included	Slightly Included	Included



November 18, 2025  
 IGI Report Number **LG749591175**  
 Description **LABORATORY GROWN DIAMOND**  
 Shape and Cutting Style **CUSHION MODIFIED BRILLIANT**  
 Measurements **9.66 X 7.55 X 4.97 MM**  
**GRADING RESULTS**  
 Carat Weight **2.72 CARATS**  
 Color Grade **F**  
 Clarity Grade **VVS 2**



**ADDITIONAL GRADING INFORMATION**

Polish **EXCELLENT**  
 Symmetry **EXCELLENT**  
 Fluorescence **NONE**  
 Inscription(s) **IGI LG749591175**  
 Comments: This Laboratory Grown Diamond was created by Chemical Vapor Deposition (CVD) growth process. Type IIa



November 18, 2025  
 IGI Report No LG749591175  
**CUSHION MODIFIED BRILLIANT**  
 9.66 X 7.55 X 4.97 MM  
 Carat Weight **2.72 CARATS**  
 Color Grade **F**  
 Clarity Grade **VVS 2**  
 Table **65.8%**  
 Girdle **82%**  
 Slightly Thick To Thick (Faceted)  
 Culet **Long Faceted**  
 Polish **EXCELLENT**  
 Symmetry **EXCELLENT**  
 Fluorescence **NONE**  
 Inscription(s) **IGI LG749591175**  
 Comments: This Laboratory Grown Diamond was created by Chemical Vapor Deposition (CVD) growth process. Type IIa