



ELECTRONIC COPY

LABORATORY GROWN DIAMOND REPORT

November 18, 2025  
IGI Report Number LG749589920  
Description LABORATORY GROWN DIAMOND  
Shape and Cutting Style EMERALD CUT  
Measurements 12.63 X 9.30 X 6.36 MM

GRADING RESULTS

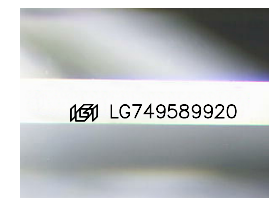
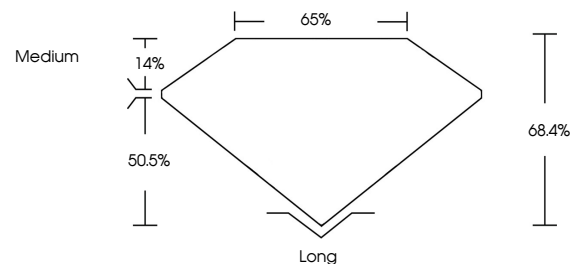
Carat Weight 7.20 CARATS  
Color Grade E  
Clarity Grade VVS 2

ADDITIONAL GRADING INFORMATION

Polish EXCELLENT  
Symmetry EXCELLENT  
Fluorescence NONE  
Inscription(s) IGI LG749589920

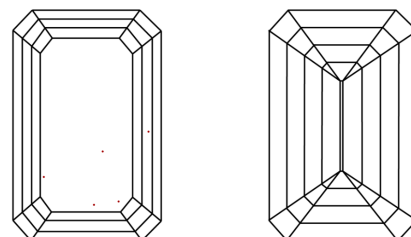
Comments: This Laboratory Grown Diamond was created by Chemical Vapor Deposition (CVD) growth process. Type IIa

PROPORTIONS



Sample Image Used

CLARITY CHARACTERISTICS



KEY TO SYMBOLS

Red symbols indicate internal characteristics.  
Green symbols indicate external characteristics.

COLOR

D E F G H I J Faint Very Light Light

CLARITY

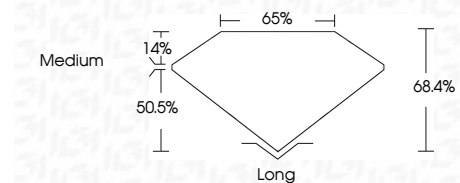
FL IF VS<sup>1-2</sup> VS<sup>1-2</sup> SI<sup>1-2</sup> I<sup>1-3</sup>  
Flawless Internally Flawless Very Very Slightly Included Very Slightly Included Slightly Included Included



November 18, 2025  
IGI Report Number LG749589920  
Description LABORATORY GROWN DIAMOND  
Shape and Cutting Style EMERALD CUT  
Measurements 12.63 X 9.30 X 6.36 MM

GRADING RESULTS

Carat Weight 7.20 CARATS  
Color Grade E  
Clarity Grade VVS 2



ADDITIONAL GRADING INFORMATION

Polish EXCELLENT  
Symmetry EXCELLENT  
Fluorescence NONE  
Inscription(s) IGI LG749589920  
Comments: This Laboratory Grown Diamond was created by Chemical Vapor Deposition (CVD) growth process. Type IIa



November 18, 2025  
IGI Report No LG749589920  
EMERALD CUT  
12.63 X 9.30 X 6.36 MM  
7.20 CARATS  
E  
Color Grade  
VVS 2  
Depth 68.4%  
Table 65%  
Girdle  
Medium  
Long  
Culet  
EXCELLENT  
Polish  
EXCELLENT  
Symmetry  
NONE  
Fluorescence  
NONE  
Inscription(s)  
IGI LG749589920  
Comments: This Laboratory Grown Diamond was created by Chemical Vapor Deposition (CVD) growth process. Type IIa