



ELECTRONIC COPY

LABORATORY GROWN DIAMOND REPORT

LG749587670
Report verification at igi.org

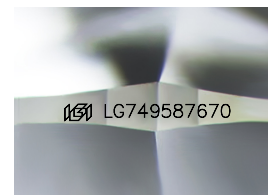
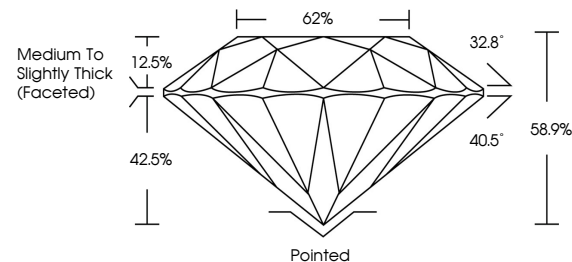
November 18, 2025	
IGI Report Number	LG749587670
Description	LABORATORY GROWN DIAMOND
Shape and Cutting Style	ROUND BRILLIANT
Measurements	11.63 - 11.70 X 6.86 MM
GRADING RESULTS	
Carat Weight	5.76 CARATS
Color Grade	F
Clarity Grade	VS 1
Cut Grade	EXCELLENT

ADDITIONAL GRADING INFORMATION

Polish	EXCELLENT
Symmetry	EXCELLENT
Fluorescence	NONE
Inscription(s)	 LG749587670

Comments: This Laboratory Grown Diamond was created by Chemical Vapor Deposition (CVD) growth process.
Type IIa

PROPORTIONS



Sample Image Used

COLOR

D E F G H I J Faint Very Light Light

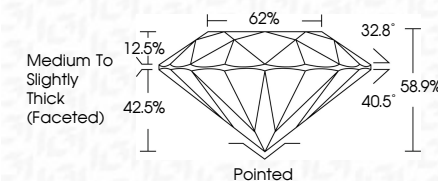
CLARITY

FL	IF	VVS ¹⁻²	VS ¹⁻²	SI ¹⁻²	I ¹⁻³
Flawless	Internally Flawless	Very Very Slightly Included	Very Slightly Included	Slightly Included	Included

LABORATORY GROWN DIAMOND REPORT



November 18, 2025	
IGI Report Number	LG749587670
Description	LABORATORY GROWN DIAMOND
Shape and Cutting Style	ROUND BRILLIANT
Measurements	11.63 - 11.70 X 6.86 MM
GRADING RESULTS	
Carat Weight	5.76 CARATS
Color Grade	F
Clarity Grade	VS 1
Cut Grade	EXCELLENT



ADDITIONAL GRADING INFORMATION

Polish	EXCELLENT
Symmetry	EXCELLENT
Fluorescence	NONE
Inscription(s)	LG LG749587670
<p>Comments: This Laboratory Grown Diamond was created by Chemical Vapor Deposition (CVD) growth process.</p> <p>Type IIa</p>	



© IGI 2020, International Gemological Institute

FD - 10 20

www.igi.org



THIS DOCUMENT WAS PRODUCED WITH THE FOLLOWING SECURITY MEASURES: SPECIAL DOCUMENT PAPER, INK SCREENS, WATERMARK, BACKGROUND DESIGNS, HOLOGRAM AND OTHER SECURITY FEATURES NOT LISTED AND DO EXCEED DOCUMENT SECURITY INDUSTRY GUIDELINES

November 18, 2025
IGI Report No LG749587670
ROUND BRILLIANT

11.43 - 11.70 x 6.86 MM	Carat Weight	5.76 CARATS
	Color Grade	F
	Clarity Grade	VS 1
	Cut Grade	EXCELLENT
	Depth	68.9%
	Table	62%
	Girdle	Medium to Slightly Thick (faceted)
	Culet	Pointed
	Polish	EXCELLENT
	Symmetry	EXCELLENT
	Fluorescence	NONE
	Report #	6011274032370

Comments:
This Laboratory Grown Diamond was created by Chemical Vapor Deposition (CVD) growth process.