



November 15, 2025

**IGI Report Number** LG749586284  
**SQUARE CUSHION MODIFIED  
BRILLIANT**

**LABORATORY GROWN DIAMOND**  
**5.36 X 5.22 X 3.58 MM**

**Carat Weight** 0.75 CARAT  
**Color Grade** E  
**Clarity Grade** VVS 2  
**Polish** EXCELLENT  
**Symmetry** EXCELLENT  
**Fluorescence** NONE  
**Inscription(s)** IGI LG749586284

**Comments:** As Grown - No indication of post-growth treatment. This Laboratory Grown Diamond was created by High Pressure High Temperature (HPHT) growth process. Type II

**LABORATORY GROWN DIAMOND REPORT**

November 15, 2025

**IGI Report Number** LG749586284

**Description** LABORATORY GROWN DIAMOND

**Shape and Cutting Style** SQUARE CUSHION MODIFIED BRILLIANT

**Measurements** 5.36 X 5.22 X 3.58 MM

**GRADING RESULTS**

**Carat Weight** 0.75 CARAT

**Color Grade** E

**Clarity Grade** VVS 2

**ADDITIONAL GRADING INFORMATION**

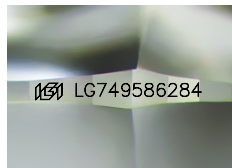
**Polish** EXCELLENT

**Symmetry** EXCELLENT

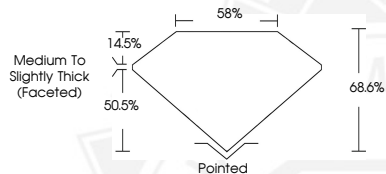
**Fluorescence** NONE

**Inscription(s)** IGI LG749586284

**Comments:** As Grown - No indication of post-growth treatment. This Laboratory Grown Diamond was created by High Pressure High Temperature (HPHT) growth process. Type II



Sample Image Used



November 15, 2025

**IGI Report Number** LG749586284  
**SQUARE CUSHION MODIFIED  
BRILLIANT**

**LABORATORY GROWN DIAMOND**  
**5.36 X 5.22 X 3.58 MM**

**Carat Weight** 0.75 CARAT  
**Color Grade** E  
**Clarity Grade** VVS 2  
**Polish** EXCELLENT  
**Symmetry** EXCELLENT  
**Fluorescence** NONE  
**Inscription(s)** IGI LG749586284

**Comments:** As Grown - No indication of post-growth treatment. This Laboratory Grown Diamond was created by High Pressure High Temperature (HPHT) growth process. Type II



THIS DOCUMENT WAS PRODUCED WITH THE FOLLOWING SECURITY MEASURES: SPECIAL DOCUMENT PAPER, INK SCREENS, WATERMARK, BACKGROUND DESIGNS, HOLOGRAM AND OTHER SECURITY FEATURES NOT LISTED AND DO EXCEED DOCUMENT SECURITY INDUSTRY GUIDELINES.