



ELECTRONIC COPY

LG749585444
Report verification at igi.org



November 18, 2025
IGI Report Number **LG749585444**
Description **LABORATORY GROWN DIAMOND**
Shape and Cutting Style **MODIFIED MARQUISE STEP CUT**
Measurements **16.78 X 5.91 X 3.49 MM**
GRADING RESULTS
Carat Weight **2.60 CARATS**
Color Grade **F**
Clarity Grade **VVS 2**

LABORATORY GROWN DIAMOND REPORT

November 18, 2025
IGI Report Number **LG749585444**
Description **LABORATORY GROWN DIAMOND**
Shape and Cutting Style **MODIFIED MARQUISE STEP CUT**
Measurements **16.78 X 5.91 X 3.49 MM**

GRADING RESULTS

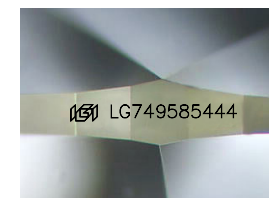
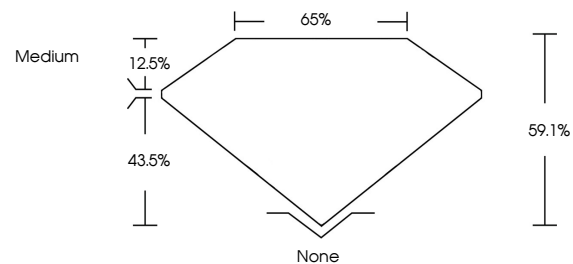
Carat Weight **2.60 CARATS**
Color Grade **F**
Clarity Grade **VVS 2**

ADDITIONAL GRADING INFORMATION

Polish **EXCELLENT**
Symmetry **EXCELLENT**
Fluorescence **NONE**
Inscription(s) **IGI LG749585444**

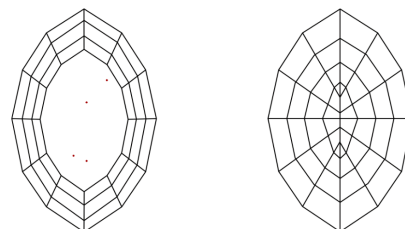
Comments: This Laboratory Grown Diamond was created by Chemical Vapor Deposition (CVD) growth process.
Type IIa

PROPORTIONS



Sample Image Used

CLARITY CHARACTERISTICS



KEY TO SYMBOLS

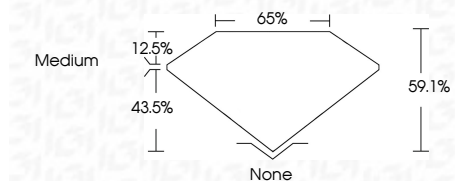
Red symbols indicate internal characteristics.
Green symbols indicate external characteristics.

COLOR

D E F G H I J Faint Very Light Light

CLARITY

FL	IF	VVS ¹⁻²	VS ¹⁻²	SI ¹⁻²	I ¹⁻³
Flawless	Internally Flawless	Very Very Slightly Included	Very Slightly Included	Slightly Included	Included



ADDITIONAL GRADING INFORMATION

Polish **EXCELLENT**
Symmetry **EXCELLENT**
Fluorescence **NONE**
Inscription(s) **IGI LG749585444**
Comments: This Laboratory Grown Diamond was created by Chemical Vapor Deposition (CVD) growth process.
Type IIa



November 18, 2025
IGI Report No LG749585444
MODIFIED MARQUISE STEP CUT

16.78 X 5.91 X 3.49 MM
2.60 CARATS
F
VVS 2
59.1%
43.5%
Medium
None
EXCELLENT
EXCELLENT
NONE
IGI LG749585444

Comments: This Laboratory Grown Diamond was created by Chemical Vapor Deposition (CVD) growth process.
Type IIa