



**ELECTRONIC COPY**

## LABORATORY GROWN DIAMOND REPORT

|                         |                            |
|-------------------------|----------------------------|
| November 18, 2025       |                            |
| IGI Report Number       | LG749583471                |
| Description             | LABORATORY GROWN DIAMOND   |
| Shape and Cutting Style | CUSHION MODIFIED BRILLIANT |
| Measurements            | 9.30 X 7.39 X 5.11 MM      |

## GRADING RESULTS

|               |             |
|---------------|-------------|
| Carat Weight  | 2.60 CARATS |
| Color Grade   | D           |
| Clarity Grade | VS 1        |

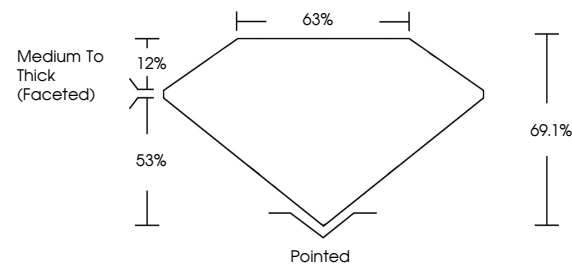
### ADDITIONAL GRADING INFORMATION

|                |   |
|----------------|---|
| Polish         | EXCELLENT   |
| Symmetry       | EXCELLENT   |
| Fluorescence   | NONE  |
| Inscription(s) |  LG749583471 |

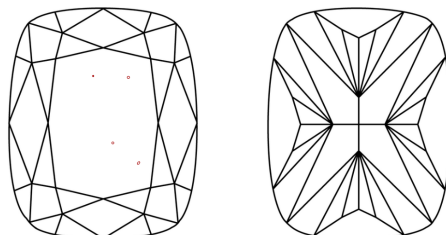
Comments: This Laboratory Grown Diamond was created by Chemical Vapor Deposition (CVD) growth process.  
Type IIa

LG749583471  
Report verification at [igi.org](https://igi.org)

## PROPORTIONS

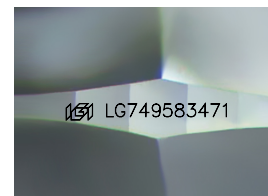


## CLARITY CHARACTERISTICS



## KEY TO SYMBOLS

Red symbols indicate internal characteristics.  
Green symbols indicate external characteristics.



Sample Image Used

**COLOR**

D E F G H I J Faint Very Light Light

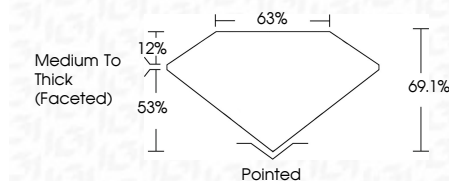
## CLARITY

| FL       | IF                  | VVS <sup>1-2</sup>          | VS <sup>1-2</sup>      | SI <sup>1-2</sup> | I <sup>1-3</sup> |
|----------|---------------------|-----------------------------|------------------------|-------------------|------------------|
| Flawless | Internally Flawless | Very Very Slightly Included | Very Slightly Included | Slightly Included | Included         |

## LABORATORY GROWN DIAMOND REPORT



|                         |                               |
|-------------------------|-------------------------------|
| November 18, 2025       |                               |
| IGI Report Number       | LG749583471                   |
| Description             | LABORATORY GROWN DIAMOND      |
| Shape and Cutting Style | CUSHION MODIFIED<br>BRILLIANT |
| Measurements            | 9.30 X 7.39 X 5.11 MM         |
| GRADING RESULTS         |                               |
| Carat Weight            | 2.60 CARATS                   |
| Color Grade             | D                             |
| Clarity Grade           | VS 1                          |



### ADDITIONAL GRADING INFORMATION

|  |   |
|--|---|
| Polish   | EXCELLENT   |
| Symmetry   | EXCELLENT   |
| Fluorescence   | NONE  |
| Inscription(s)   |  LG749583471 |
| Comments: This Laboratory Grown Diamond was created by Chemical Vapor Deposition (CVD) growth process. |   |
| Type IIa   |   |



© IGI 2020, International Gemological Institute

FD - 10 20



THIS DOCUMENT WAS PRODUCED WITH THE FOLLOWING SECURITY MEASURES: SPECIAL DOCUMENT PAPER, INK SCREENS, WATERMARK, BACKGROUND DESIGNS, HOLOGRAM AND OTHER SECURITY FEATURES NOT LISTED AND DO EXCEED DOCUMENT SECURITY INDUSTRY GUIDELINES

November 18, 2025  
 CGI Report No LG749583471  
 DISHION MODIFIED RRI || ANT

|                       |                           |
|-----------------------|---------------------------|
| 2.30 X 7.99 X 5.11 MM | 2.60 CARATS               |
| Carat Weight          | D                         |
| Color Grade           | Vs 1                      |
| Clarity Grade         | 69.1%                     |
| Depth                 | 65%                       |
| Table                 | Medium to Thick (faceted) |
| Girdle                | Pointed                   |
| Quiet                 | EXCELLENT                 |
| Polish                | EXCELLENT                 |
| Symmetry              | NONE                      |
| Fluorescence          | 4mm 1.57 (n/a, 0.71)      |
| Measurements (mm)     |                           |

**Comments:**  
This Laboratory Grown Diamond was created by Chemical Vapor Deposition (CVD) growth process.

**www.igi.org**