



ELECTRONIC COPY

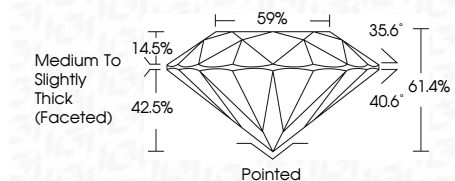
LG749580071 Report verification at igi.org



November 15, 2025 IGI Report Number LG749580071 Description LABORATORY GROWN DIAMOND Shape and Cutting Style ROUND BRILLIANT Measurements 9.28 - 9.31 X 5.70 MM

GRADING RESULTS

Carat Weight 3.08 CARATS Color Grade F Clarity Grade VVS 2 Cut Grade IDEAL



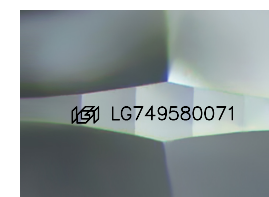
ADDITIONAL GRADING INFORMATION

Polish EXCELLENT Symmetry EXCELLENT Fluorescence NONE Inscription(s) LG749580071 Comments: This Laboratory Grown Diamond was created by Chemical Vapor Deposition (CVD) growth process. Type IIa



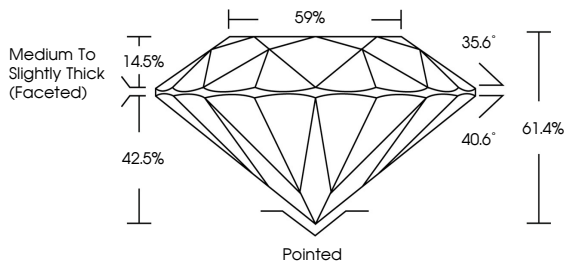
November 15, 2025 IGI Report No LG749580071 ROUND BRILLIANT 3.08 CARATS F VVS 2 IDEAL 61.4% 59% Medium To Slightly Thick (Faceted) Pointed EXCELLENT EXCELLENT NONE NONE LG749580071

Comments: This Laboratory Grown Diamond was created by Chemical Vapor Deposition (CVD) growth process. Type IIa

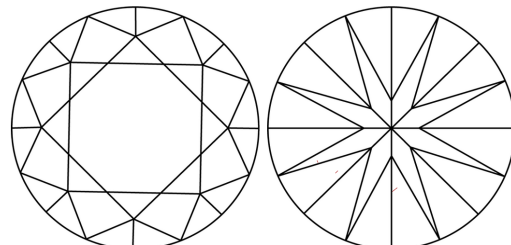


Sample Image Used

PROPORTIONS



CLARITY CHARACTERISTICS



KEY TO SYMBOLS

Red symbols indicate internal characteristics. Green symbols indicate external characteristics.

COLOR

Color scale: D, E, F, G, H, I, J, Faint, Very Light, Light

CLARITY

Clarity scale: FL, IF, VVS 1-2, VS 1-2, SI 1-2, I 1-3

LABORATORY GROWN DIAMOND REPORT

November 15, 2025 IGI Report Number LG749580071 Description LABORATORY GROWN DIAMOND Shape and Cutting Style ROUND BRILLIANT Measurements 9.28 - 9.31 X 5.70 MM

GRADING RESULTS

Carat Weight 3.08 CARATS Color Grade F Clarity Grade VVS 2 Cut Grade IDEAL

ADDITIONAL GRADING INFORMATION

Polish EXCELLENT Symmetry EXCELLENT Fluorescence NONE Inscription(s) LG749580071

Comments: This Laboratory Grown Diamond was created by Chemical Vapor Deposition (CVD) growth process. Type IIa

Certified SUSTAINABILITY RATED DIAMOND SCS GLOBAL SERVICES All certified diamonds come with an individual certificate, ONLY available at an accredited retailer



FOR THE SUSTAINABILITY RATED CERTIFICATE, SCAN HERE ->

