



ELECTRONIC COPY

LG749579157
Report verification at igi.org



November 21, 2025

IGI Report Number **LG749579157**

Description **LABORATORY GROWN DIAMOND**

Shape and Cutting Style **ROUND BRILLIANT**

Measurements **11.07 - 11.11 X 6.68 MM**

GRADING RESULTS

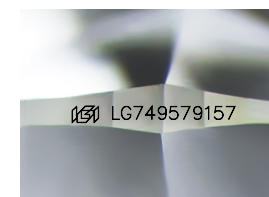
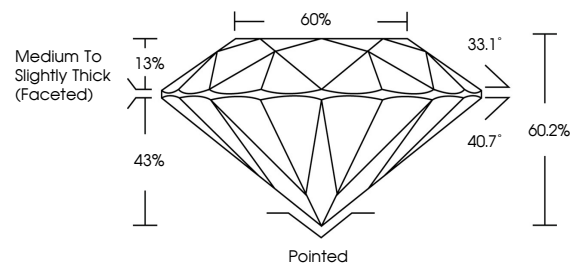
Carat Weight **5.09 CARATS**

Color Grade **E**

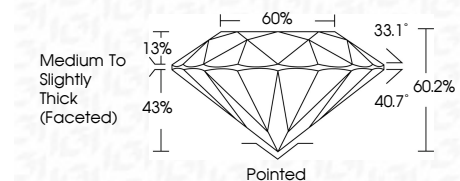
Clarity Grade **VVS 2**

Cut Grade **IDEAL**

PROPORTIONS



Sample Image Used



ADDITIONAL GRADING INFORMATION

Polish **EXCELLENT**

Symmetry **EXCELLENT**

Fluorescence **NONE**

Inscription(s) **IGI LG749579157**

Comments: This Laboratory Grown Diamond was created by Chemical Vapor Deposition (CVD) growth process. Type IIa



COLOR

D E F G H I J Faint Very Light Light

CLARITY

FL	IF	VVS ¹⁻²	VS ¹⁻²	SI ¹⁻²	I ¹⁻³
Flawless	Internally Flawless	Very Very Slightly Included	Very Slightly Included	Slightly Included	Included



November 21, 2025
IGI Report No LG749579157
ROUND BRILLIANT

5.09 CARATS
E

11.07 - 11.11 X 6.68 MM

Color Grade **VVS 2**
Clarity Grade **IDEAL**
Depth **60.2%**
Table **60%**
Girdle **Medium To Slightly Thick (Faceted)**

Culet **Pointed**
Polish **EXCELLENT**
Symmetry **EXCELLENT**
Fluorescence **NONE**
Inscriptions(s) **IGI LG749579157**

Comments: This Laboratory Grown Diamond was created by Chemical Vapor Deposition (CVD) growth process. Type IIa