



**ELECTRONIC COPY**

## LABORATORY GROWN DIAMOND REPORT

|                         |                          |
|-------------------------|--------------------------|
| December 5, 2025        |                          |
| IGI Report Number       | LG749578299              |
| Description             | LABORATORY GROWN DIAMOND |
| Shape and Cutting Style | ROUND BRILLIANT          |
| Measurements            | 7.40 - 7.44 X 4.48 MM    |

## GRADING RESULTS

|               |            |
|---------------|------------|
| Carat Weight  | 1.51 CARAT |
| Color Grade   | D          |
| Clarity Grade | VVS 1      |
| Cut Grade     | EXCELLENT  |

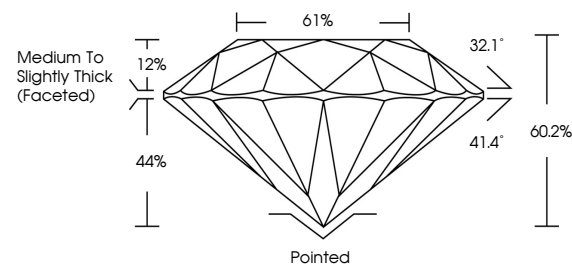
### ADDITIONAL GRADING INFORMATION

|                |                 |
|----------------|-----------------|
| Polish         | EXCELLENT       |
| Symmetry       | EXCELLENT       |
| Fluorescence   | NONE            |
| Inscription(s) | 151 LG749578299 |

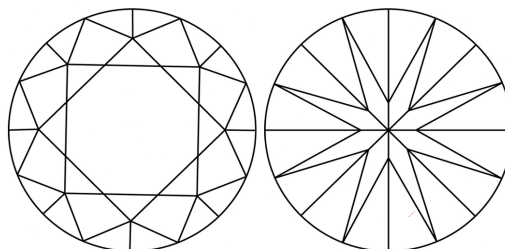
Comments: This Laboratory Grown Diamond was created by Chemical Vapor Deposition (CVD) growth process.  
Type IIa

LG749578299  
Report verification at [igi.org](https://igi.org)

## PROPORTIONS

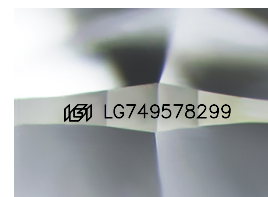


## CLARITY CHARACTERISTICS



## KEY TO SYMBOLS

Red symbols indicate internal characteristics.  
Green symbols indicate external characteristics.



Sample Image Used

## COLOR

D E F G H I J Faint Very Light Light

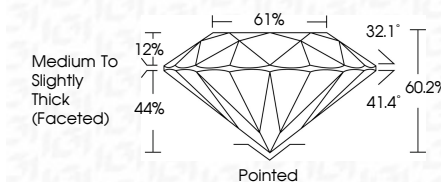
## CLARITY

| FL       | IF                  | VVS <sup>1-2</sup>          | VS <sup>1-2</sup>      | SI <sup>1-2</sup> | I <sup>1-3</sup> |
|----------|---------------------|-----------------------------|------------------------|-------------------|------------------|
| Flawless | Internally Flawless | Very Very Slightly Included | Very Slightly Included | Slightly Included | Included         |

## LABORATORY GROWN DIAMOND REPORT



|                         |                          |
|-------------------------|--------------------------|
| December 5, 2025        |                          |
| IGI Report Number       | LG749578299              |
| Description             | LABORATORY GROWN DIAMOND |
| Shape and Cutting Style | ROUND BRILLIANT          |
| Measurements            | 7.40 - 7.44 X 4.48 MM    |
| GRADING RESULTS         |                          |
| Carat Weight            | 1.51 CARAT               |
| Color Grade             | D                        |
| Clarity Grade           | VVS1                     |
| Cut Grade               | EXCELLENT                |



### ADDITIONAL GRADING INFORMATION

|   |   |
|---|---|
| Polish  | EXCELLENT   |
| Symmetry  | EXCELLENT   |
| Fluorescence  | NONE  |
| Inscription(s)  |  LG749578299 |
| <p>Comments: This Laboratory Grown Diamond was created by Chemical Vapor Deposition (CVD) growth process.</p> <p>Type IIa</p> |   |



© IGI 2020, International Gemological Institute

FD - 10 20



THIS DOCUMENT WAS PRODUCED WITH THE FOLLOWING SECURITY MEASURES: SPECIAL DOCUMENT PAPER, INK SCREENS, WATERMARK, BACKGROUND DESIGNS, HOLOGRAM AND OTHER SECURITY FEATURES NOT LISTED AND DO EXCEED DOCUMENT SECURITY INDUSTRY GUIDELINES

**www.igi.org**

December 5, 2025  
 LGI Report No LG749578299  
 ROUND BRILLIANT

|                 |                       |              |             |               |           |       |       |                                  |         |           |           |              |                    |
|-----------------|-----------------------|--------------|-------------|---------------|-----------|-------|-------|----------------------------------|---------|-----------|-----------|--------------|--------------------|
| ROUND BRILLIANT | 4.40 - 7.44 X 4.68 MM | 1.51 CARAT   | D           | VVS 1         | EXCELLENT | 60.2% | 61%   | Medium to Slightly Thick Faceted | Pointed | EXCELLENT | EXCELLENT | NONE         | Serial: 1274575290 |
|                 |                       | Carat Weight | Color Grade | Clarity Grade | Cut Grade | Depth | Table | Grades                           | Culet   | Polish    | Symmetry  | Fluorescence |                    |

**Comments:**  
This Laboratory Grown Diamond was created by Chemical Vapor Deposition (CVD) growth process.