



**ELECTRONIC COPY**

LG749576354  
Report verification at igi.org



December 10, 2025

IGI Report Number **LG749576354**

Description **LABORATORY GROWN DIAMOND**

Shape and Cutting Style **HEART BRILLIANT**

Measurements **6.51 X 6.99 X 4.09 MM**

**GRADING RESULTS**

Carat Weight **1.08 CARAT**

Color Grade **D**

Clarity Grade **VS 1**

December 10, 2025  
IGI Report Number **LG749576354**  
Description **LABORATORY GROWN DIAMOND**  
Shape and Cutting Style **HEART BRILLIANT**  
Measurements **6.51 X 6.99 X 4.09 MM**

**GRADING RESULTS**

Carat Weight **1.08 CARAT**

Color Grade **D**

Clarity Grade **VS 1**

**ADDITIONAL GRADING INFORMATION**

Polish **GOOD**

Symmetry **GOOD**

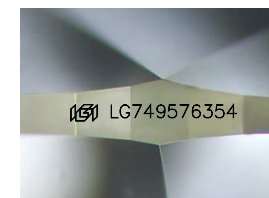
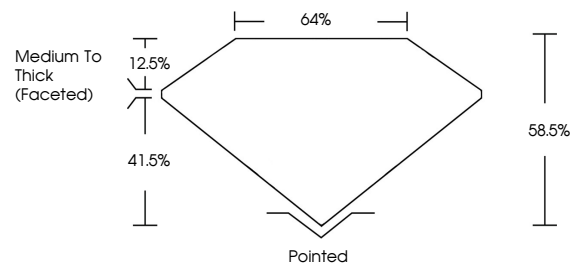
Fluorescence **NONE**

Inscription(s) **IGI LG749576354**

Comments: As Grown - No indication of post-growth treatment.

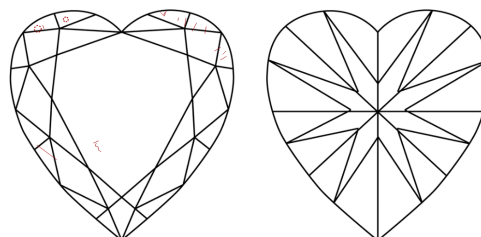
This Laboratory Grown Diamond was created by High Pressure High Temperature (HPHT) growth process. Type II

**PROPORTIONS**



Sample Image Used

**CLARITY CHARACTERISTICS**



**KEY TO SYMBOLS**

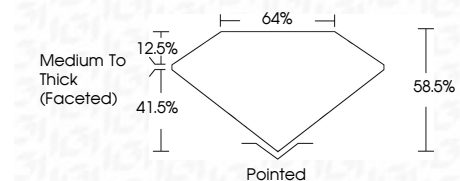
Red symbols indicate internal characteristics.  
Green symbols indicate external characteristics.

**COLOR**

D E F G H I J Faint Very Light Light

**CLARITY**

FL	IF	VS <sup>1-2</sup>	VS <sup>1-2</sup>	SI <sup>1-2</sup>	I <sup>1-3</sup>
Flawless	Internally Flawless	Very Very Slightly Included	Very Slightly Included	Slightly Included	Included



**ADDITIONAL GRADING INFORMATION**

Polish **GOOD**

Symmetry **GOOD**

Fluorescence **NONE**

Inscription(s) **IGI LG749576354**

Comments: As Grown - No indication of post-growth treatment.

This Laboratory Grown Diamond was created by High Pressure High Temperature (HPHT) growth process. Type II



**IGI**



December 10, 2025  
IGI Report No LG749576354  
**HEART BRILLIANT**  
6.51 X 6.99 X 4.09 MM  
1.08 CARAT  
D  
VS 1  
68.6%  
41%  
Medium to Thick (Faceted)  
Pointed  
GOOD  
GOOD  
NONE  
IGI LG749576354

Comments: As Grown - No indication of post-growth treatment.  
This Laboratory Grown Diamond was created by High Pressure High Temperature (HPHT) growth process. Type II