



ELECTRONIC COPY

LG749575358
Report verification at igi.org



December 16, 2025
IGI Report Number **LG749575358**
Description **LABORATORY GROWN DIAMOND**
Shape and Cutting Style **EMERALD CUT**
Measurements **14.74 X 10.39 X 6.59 MM**
GRADING RESULTS
Carat Weight **10.07 CARATS**
Color Grade **H**
Clarity Grade **VVS 2**

LABORATORY GROWN DIAMOND REPORT

December 16, 2025
IGI Report Number **LG749575358**
Description **LABORATORY GROWN DIAMOND**
Shape and Cutting Style **EMERALD CUT**
Measurements **14.74 X 10.39 X 6.59 MM**

GRADING RESULTS

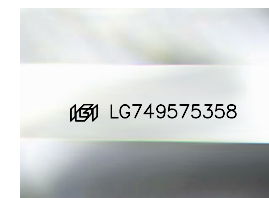
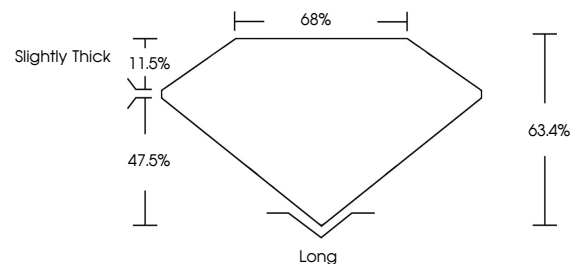
Carat Weight **10.07 CARATS**
Color Grade **H**
Clarity Grade **VVS 2**

ADDITIONAL GRADING INFORMATION

Polish **EXCELLENT**
Symmetry **EXCELLENT**
Fluorescence **NONE**
Inscription(s) **IGI LG749575358**

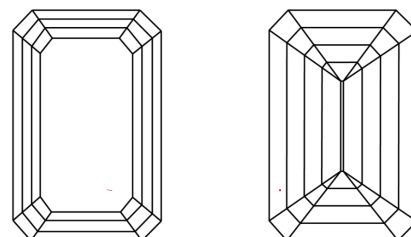
Comments: This Laboratory Grown Diamond was created by Chemical Vapor Deposition (CVD) growth process. Type IIa

PROPORTIONS



Sample Image Used

CLARITY CHARACTERISTICS



KEY TO SYMBOLS

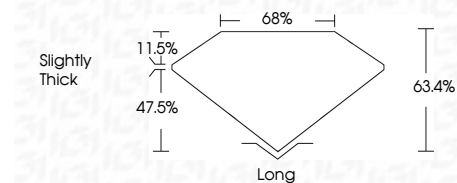
Red symbols indicate internal characteristics.
Green symbols indicate external characteristics.

COLOR

D E F G H I J Faint Very Light Light

CLARITY

FL	IF	VVS ¹⁻²	VS ¹⁻²	SI ¹⁻²	I ¹⁻³
Flawless	Internally Flawless	Very Very Slightly Included	Very Slightly Included	Slightly Included	Included



ADDITIONAL GRADING INFORMATION

Polish **EXCELLENT**
Symmetry **EXCELLENT**
Fluorescence **NONE**
Inscription(s) **IGI LG749575358**
Comments: This Laboratory Grown Diamond was created by Chemical Vapor Deposition (CVD) growth process. Type IIa



December 16, 2025
IGI Report No LG749575358
EMERALD CUT
14.74 X 10.39 X 6.59 MM
10.07 CARATS
H
10.07 CARATS
H
VVS 2
68.4%
47.5%
Slightly Thick
Long
EXCELLENT
EXCELLENT
NONE
IGI LG749575358
Comments: This Laboratory Grown Diamond was created by Chemical Vapor Deposition (CVD) growth process. Type IIa