



ELECTRONIC COPY

LABORATORY GROWN DIAMOND REPORT

| | |
|-------------------------|--------------------------|
| December 11, 2025 | |
| IGI Report Number | LG749575183 |
| Description | LABORATORY GROWN DIAMOND |
| Shape and Cutting Style | ROUND BRILLIANT |
| Measurements | 6.50 - 6.54 X 3.99 MM |

GRADING RESULTS

| | |
|---------------|------------|
| Carat Weight | 1.04 CARAT |
| Color Grade | D |
| Clarity Grade | VVS 2 |
| Cut Grade | IDEAL |

ADDITIONAL GRADING INFORMATION

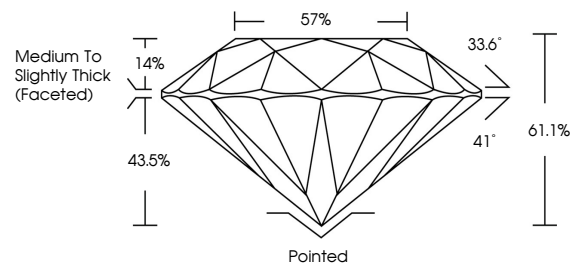
| | |
|----------------|---|
| Polish | EXCELLENT |
| Symmetry | EXCELLENT |
| Fluorescence | NONE |
| Inscription(s) |  LG749575183 |

Comments: As Grown - No indication of post-growth treatment.

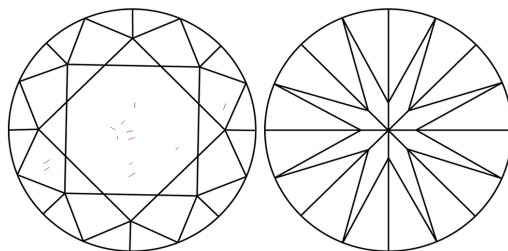
This Laboratory Grown Diamond was created by High Pressure High Temperature (HPHT) growth process.
Type II

LG749575183
Report verification at igi.org

PROPORTIONS

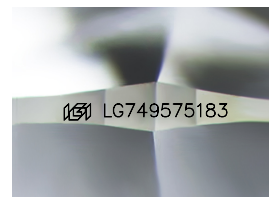


CLARITY CHARACTERISTICS



KEY TO SYMBOLS

Red symbols indicate internal characteristics.
Green symbols indicate external characteristics.



Sample Image Used

COLOR

D E F G H I J Faint Very Light Light

CLARITY

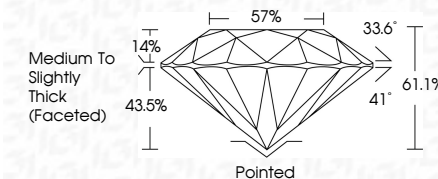
| FL | IF | VVS ¹⁻² | VS ¹⁻² | SI ¹⁻² | I ¹⁻³ |
|----------|---------------------|--------------------|------------------------|-------------------|------------------|
| Flawless | Internally Flawless | Very Very Included | Very Slightly Included | Slightly Included | Included |



| | |
|-------------------------|--------------------------|
| December 11, 2025 | |
| IGI Report Number | LG749575183 |
| Description | LABORATORY GROWN DIAMOND |
| Shape and Cutting Style | ROUND BRILLIANT |
| Measurements | 6.50 - 6.54 X 3.99 MM |

GRADING RESULTS

| | |
|---------------|------------|
| Carat Weight | 1.04 CARAT |
| Color Grade | D |
| Clarity Grade | VVS 2 |
| Cut Grade | IDEAL |



ADDITIONAL GRADING INFORMATION

| | |
|--|---------------------------|
| Polish | EXCELLENT |
| Symmetry | EXCELLENT |
| Fluorescence | NONE |
| Inscription(s) | LG LG749575183 |
| Comments: As Grown - No indication of post-growth treatment. | |
| This Laboratory Grown Diamond was created by High Pressure High Temperature (HPHT) growth process. | |
| Type II | |



IG



© IGI 2020, International Gemological Institute

FD - 10 20



THIS DOCUMENT WAS PRODUCED WITH THE FOLLOWING SECURITY MEASURES: SPECIAL DOCUMENT PAPER, INK SCREENS, WATERMARK, BACKGROUND DESIGNS, HOLOGRAM AND OTHER SECURITY FEATURES NOT LISTED AND DO EXCEED DOCUMENT SECURITY INDUSTRY GUIDELINES

www.igi.org

December 11, 2025
IGI Report No LG7495
ROUND BRILLIANT

| | | |
|-----------------------|------------------------------------|-----------|
| 6.50 - 6.64 X 3.99 MM | 1.04 CARAT | D |
| Carat Weight | VVS 2 | IDEAL |
| Color Grade | 6.11% | 57% |
| Clarity Grade | Medium to slightly Thick (faceted) | Pointed |
| Cut Grade | | EXCELLENT |
| Depth | | EXCEL |
| Table | | NONE |
| Girdle | | None |
| Culet | | None |
| Polish | | None |
| Symmetry | | None |
| Fluorescence | | None |
| Measurements | | None |

Comments:
As Grown - No Indication of post-growth treatment.
This Laboratory Grown Diamond was created by High Pressure High Temperature (HPHT) growth process.