



**ELECTRONIC COPY**

## LABORATORY GROWN DIAMOND REPORT

December 10, 2025	
IGI Report Number	LG749575130
Description	LABORATORY GROWN DIAMOND
Shape and Cutting Style	ROUND BRILLIANT
Measurements	8.01 - 8.06 X 4.87 MM

## GRADING RESULTS

Carat Weight	1.92 CARAT
Color Grade	E
Clarity Grade	VVS 2
Cut Grade	EXCELLENT

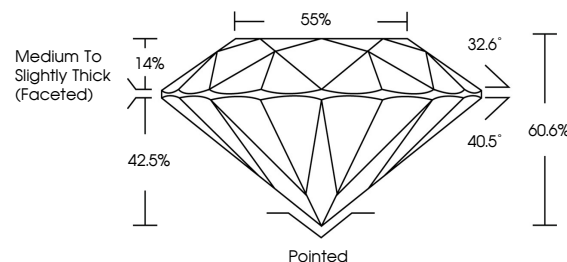
### ADDITIONAL GRADING INFORMATION

Polish	EXCELLENT
Symmetry	EXCELLENT
Fluorescence	NONE
Inscription(s)	151 LG749575130

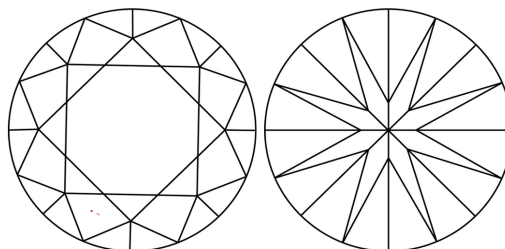
Comments: As Grown - No indication of post-growth treatment.  
This Laboratory Grown Diamond was created by High Pressure High Temperature (HPHT) growth process.  
Type II

LG749575130  
Report verification at [lgi.org](https://lgi.org)

## PROPORTIONS

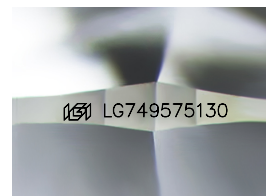


## CLARITY CHARACTERISTICS



## KEY TO SYMBOLS

Red symbols indicate internal characteristics.  
Green symbols indicate external characteristics.



Sample Image Used

## COLOR

D E F G H I J      Faint      Very Light      Light

## CLARITY

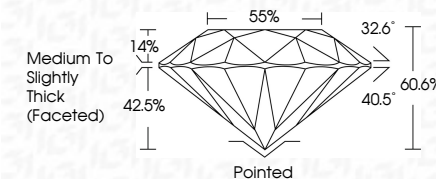
FL	IF	VVS <sup>1-2</sup>	VS <sup>1-2</sup>	SI <sup>1-2</sup>	I <sup>1-3</sup>
Flawless	Internally Flawless	Very Very Slightly Included	Very Slightly Included	Slightly Included	Included



December 10, 2025	
IGI Report Number	LG749575130
Description	LABORATORY GROWN DIAMOND
Shape and Cutting Style	ROUND BRILLIANT
Measurements	8.01 - 8.06 X 4.87 MM

## GRADING RESULTS

Carat Weight	1.92 CARAT
Color Grade	E
Clarity Grade	VVS 2
Cut Grade	EXCELLENT



### ADDITIONAL GRADING INFORMATION

Polish	EXCELLENT
Symmetry	EXCELLENT
Fluorescence	NONE
Inscription(s)	<del>LG</del> LG749575130
Comments: As Grown - No indication of post-growth treatment.	
This Laboratory Grown Diamond was created by High Pressure High Temperature (HPHT) growth process.	
Type II	



© IGI 2020, International Gemological Institute

FD - 10 20



THIS DOCUMENT WAS PRODUCED WITH THE FOLLOWING SECURITY MEASURES: SPECIAL DOCUMENT PAPER, INK SCREENS, WATERMARK, BACKGROUND DESIGNS, HOLOGRAM AND OTHER SECURITY FEATURES NOT LISTED AND DO EXCEED DOCUMENT SECURITY INDUSTRY GUIDELINES

**www.igi.org**

December 10, 2025  
IGI Report No LG749575130  
ROUND BRILLIANT

8.01 - 8.06 X 4.87 MM		1.92 CARAT
Carat Weight		E
Color Grade		VVS 2
Clarity Grade		EXCELLENT
Cut Grade		60.06%
Depth		56%
Table		Medium to Slightly Thick (faceted)
Girdle		
Culet		Pointed
Polish		EXCELLENT
Symmetry		EXCELLENT
Fluorescence		NONE
Comments		see 127 00757530

**Comments:**  
As Grown - No indication of post-growth treatment.  
This Laboratory Grown Diamond was created by High Pressure High Temperature (HPHT) growth process.