



ELECTRONIC COPY

LG749574990
Report verification at igi.org



January 19, 2026

IGI Report Number **LG749574990**

Description **LABORATORY GROWN DIAMOND**

Shape and Cutting Style **ROUND BRILLIANT**

Measurements **6.45 - 6.48 X 4.01 MM**

GRADING RESULTS

Carat Weight **1.03 CARAT**

Color Grade **FANCY INTENSE BLUE**

Clarity Grade **VS 1**

Cut Grade **IDEAL**

January 19, 2026
IGI Report Number **LG749574990**
Description **LABORATORY GROWN DIAMOND**
Shape and Cutting Style **ROUND BRILLIANT**
Measurements **6.45 - 6.48 X 4.01 MM**

GRADING RESULTS

Carat Weight **1.03 CARAT**

Color Grade **FANCY INTENSE BLUE**

Clarity Grade **VS 1**

Cut Grade **IDEAL**

ADDITIONAL GRADING INFORMATION

Polish **EXCELLENT**

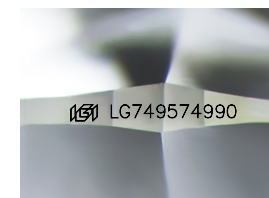
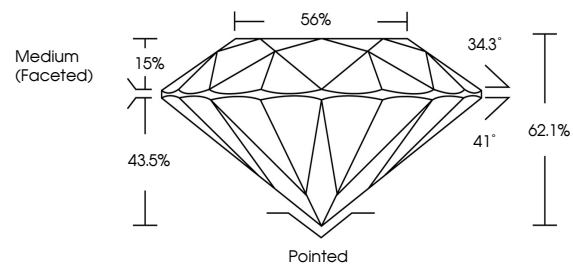
Symmetry **EXCELLENT**

Fluorescence **NONE**

Inscription(s) **IGI LG749574990**

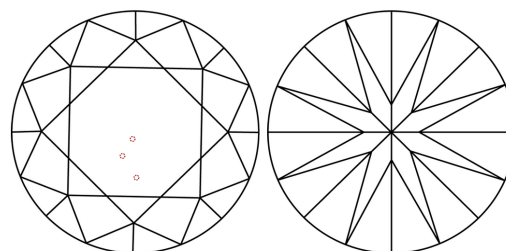
Comments: This Laboratory Grown Diamond was created by Chemical Vapor Deposition (CVD) growth process.
Indications of post-growth treatment.

PROPORTIONS



Sample Image Used

CLARITY CHARACTERISTICS



KEY TO SYMBOLS

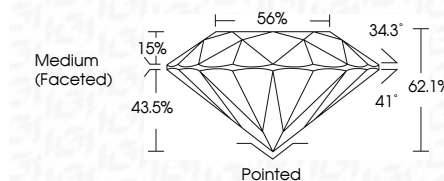
Red symbols indicate internal characteristics.
Green symbols indicate external characteristics.

COLOR

D E F G H I J Faint Very Light Light

CLARITY

FL	IF	VS ¹⁻²	VS ¹⁻²	SI ¹⁻²	I ¹⁻³
Flawless	Internally Flawless	Very Very Slightly Included	Very Slightly Included	Slightly Included	Included



ADDITIONAL GRADING INFORMATION

Polish **EXCELLENT**

Symmetry **EXCELLENT**

Fluorescence **NONE**

Inscription(s) **IGI LG749574990**

Comments: This Laboratory Grown Diamond was created by Chemical Vapor Deposition (CVD) growth process.
Indications of post-growth treatment.



January 19, 2026
IGI Report No LG749574990
ROUND BRILLIANT

1.03 CARAT
Carat Weight
FANCY INTENSE BLUE
Color Grade
VS 1
Clarity Grade
IDEAL
Depth
62.1%
Table
56%
Girdle
Medium (Faceted)

Pointed
EXCELLENT
Symmetry
EXCELLENT
Fluorescence
NONE
Inscriptions(s)
IGI LG749574990

Comments: This Laboratory Grown Diamond was created by Chemical Vapor Deposition (CVD) growth process.
Indications of post-growth treatment.