



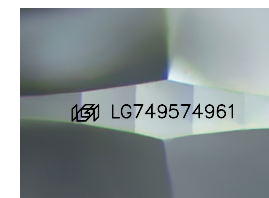
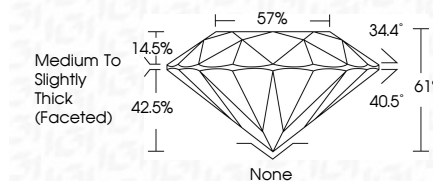
ELECTRONIC COPY

LG749574961
Report verification at igi.org



January 19, 2026
IGI Report Number **LG749574961**
Description **LABORATORY GROWN DIAMOND**
Shape and Cutting Style **ROUND BRILLIANT**
Measurements **6.41 - 6.46 X 3.93 MM**

GRADING RESULTS
Carat Weight **1.01 CARAT**
Color Grade **FANCY INTENSE BLUE**
Clarity Grade **VVS 2**
Cut Grade **IDEAL**



Sample Image Used

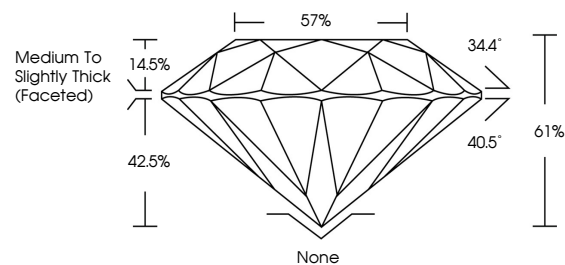
ADDITIONAL GRADING INFORMATION
Polish **EXCELLENT**
Symmetry **EXCELLENT**
Fluorescence **NONE**
Inscription(s) **IGI LG749574961**
Comments: This Laboratory Grown Diamond was created by Chemical Vapor Deposition (CVD) growth process. Indications of post-growth treatment.



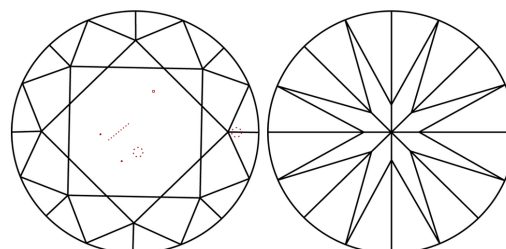
January 19, 2026
IGI Report No **LG749574961**
ROUND BRILLIANT
6.41 - 6.46 X 3.93 MM
1.01 CARAT
FANCY INTENSE BLUE
Color Grade
VVS 2
Clarity Grade
IDEAL
Depth
61%
Table
57%
Girdle
Medium To Slightly Thick (Faceted)
None
None
EXCELLENT
Symmetry
EXCELLENT
Fluorescence
NONE
Inscriptions(s)
IGI LG749574961
Comments: This Laboratory Grown Diamond was created by Chemical Vapor Deposition (CVD) growth process. Indications of post-growth treatment.



PROPORTIONS



CLARITY CHARACTERISTICS



KEY TO SYMBOLS

Red symbols indicate internal characteristics.
Green symbols indicate external characteristics.

COLOR

D E F G H I J Faint Very Light Light

CLARITY

FL	IF	VVS ¹⁻²	VS ¹⁻²	SI ¹⁻²	I ¹⁻³
Flawless	Internally Flawless	Very Very Slightly Included	Very Slightly Included	Slightly Included	Included