



ELECTRONIC COPY

LG749568293
Report verification at igi.org



November 16, 2025

IGI Report Number **LG749568293**

Description **LABORATORY GROWN DIAMOND**

Shape and Cutting Style **CUT CORNERED
RECTANGULAR MODIFIED
BRILLIANT**

Measurements **9.01 X 6.27 X 4.23 MM**

GRADING RESULTS

Carat Weight **2.07 CARATS**

Color Grade **F**

Clarity Grade **VS 2**

November 16, 2025
IGI Report Number **LG749568293**
Description **LABORATORY GROWN DIAMOND**
Shape and Cutting Style **CUT CORNERED RECTANGULAR
MODIFIED BRILLIANT**
Measurements **9.01 X 6.27 X 4.23 MM**

GRADING RESULTS

Carat Weight **2.07 CARATS**

Color Grade **F**

Clarity Grade **VS 2**

ADDITIONAL GRADING INFORMATION

Polish **EXCELLENT**

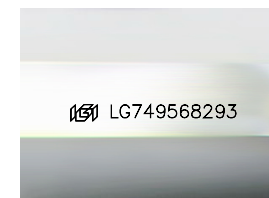
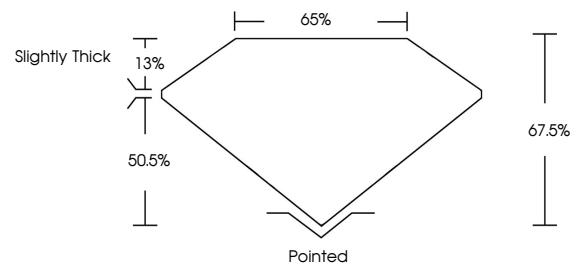
Symmetry **EXCELLENT**

Fluorescence **NONE**

Inscription(s) **IGI LG749568293**

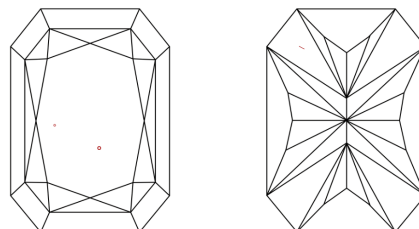
Comments: This Laboratory Grown Diamond was created by Chemical Vapor Deposition (CVD) growth process.
Type IIa

PROPORTIONS



Sample Image Used

CLARITY CHARACTERISTICS



KEY TO SYMBOLS

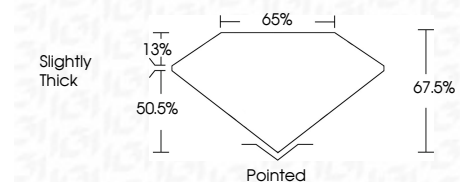
Red symbols indicate internal characteristics.
Green symbols indicate external characteristics.

COLOR

D E F G H I J Faint Very Light Light

CLARITY

FL	IF	VS ¹⁻²	VS ¹⁻²	SI ¹⁻²	I ¹⁻³
Flawless	Internally Flawless	Very Very Slightly Included	Very Slightly Included	Slightly Included	Included



ADDITIONAL GRADING INFORMATION

Polish **EXCELLENT**

Symmetry **EXCELLENT**

Fluorescence **NONE**

Inscription(s) **IGI LG749568293**

Comments: This Laboratory Grown Diamond was created by Chemical Vapor Deposition (CVD) growth process.
Type IIa



IGI



November 16, 2025
IGI Report No LG749568293
CUT CORNERED RECT. MODIFIED BRILLIANT
9.01 X 6.27 X 4.23 MM
2.07 CARATS
F
VS 2
67.5%
65%
Slightly Thick
Pointed
EXCELLENT
EXCELLENT
NONE
IGI LG749568293
Comments: This Laboratory Grown Diamond was created by Chemical Vapor Deposition (CVD) growth process.
Type IIa