



INTERNATIONAL GEMOLOGICAL INSTITUTE

ELECTRONIC COPY

LABORATORY GROWN DIAMOND REPORT

November 21, 2025

IGI Report Number

LG749567002

Description

LABORATORY GROWN DIAMOND

Shape and Cutting Style

PRINCESS CUT

Measurements

4.23 X 4.07 X 3.05 MM

GRADING RESULTS

Carat Weight

0.50 CARAT

Color Grade

FANCY INTENSE ORANGY PINK

Clarity Grade

SI 1

ADDITIONAL GRADING INFORMATION

Polish

GOOD

Symmetry

VERY GOOD

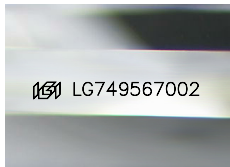
Fluorescence

SLIGHT

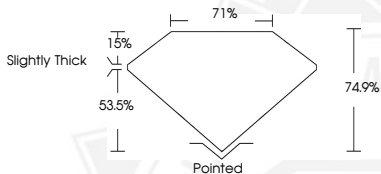
Inscription(s)

IGI LG749567002

Comments: This Laboratory Grown Diamond was created by Chemical Vapor Deposition (CVD) growth process. Indications of post-growth treatment.



Sample Image Used



November 21, 2025

IGI Report Number LG749567002

PRINCESS CUT

LABORATORY GROWN DIAMOND

4.23 X 4.07 X 3.05 MM

Carat Weight 0.50 CARAT

Color Grade FANCY INTENSE

ORANGY PINK

Clarity Grade SI 1

Polish GOOD

Symmetry VERY GOOD

Fluorescence SLIGHT

Inscription(s) IGI LG749567002

Comments: This Laboratory Grown Diamond was created by Chemical Vapor Deposition (CVD) growth process. Indications of post-growth treatment.



November 21, 2025

IGI Report Number LG749567002

PRINCESS CUT

LABORATORY GROWN DIAMOND

4.23 X 4.07 X 3.05 MM

Carat Weight 0.50 CARAT

Color Grade FANCY INTENSE

ORANGY PINK

Clarity Grade SI 1

Polish GOOD

Symmetry VERY GOOD

Fluorescence SLIGHT

Inscription(s) IGI LG749567002

Comments: This Laboratory Grown Diamond was created by Chemical Vapor Deposition (CVD) growth process. Indications of post-growth treatment.



THIS DOCUMENT WAS PRODUCED WITH THE FOLLOWING SECURITY MEASURES: SPECIAL DOCUMENT PAPER, INK SCREENS, WATERMARK, BACKGROUND DESIGNS, HOLOGRAM AND OTHER SECURITY FEATURES NOT LISTED AND DO EXCEED DOCUMENT SECURITY INDUSTRY GUIDELINES.

For terms & conditions and to verify this report, please visit www.igi.org