



**ELECTRONIC COPY**

LG749566088  
Report verification at igi.org



November 17, 2025

IGI Report Number **LG749566088**

Description **LABORATORY GROWN DIAMOND**

Shape and Cutting Style **ROUND BRILLIANT**

Measurements **9.28 - 9.32 X 5.76 MM**

**GRADING RESULTS**

Carat Weight **3.08 CARATS**

Color Grade **E**

Clarity Grade **VVS 1**

Cut Grade **IDEAL**

November 17, 2025  
IGI Report Number **LG749566088**  
Description **LABORATORY GROWN DIAMOND**  
Shape and Cutting Style **ROUND BRILLIANT**  
Measurements **9.28 - 9.32 X 5.76 MM**

**GRADING RESULTS**

Carat Weight **3.08 CARATS**

Color Grade **E**

Clarity Grade **VVS 1**

Cut Grade **IDEAL**

**ADDITIONAL GRADING INFORMATION**

Polish **EXCELLENT**

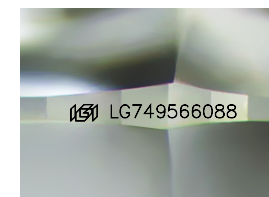
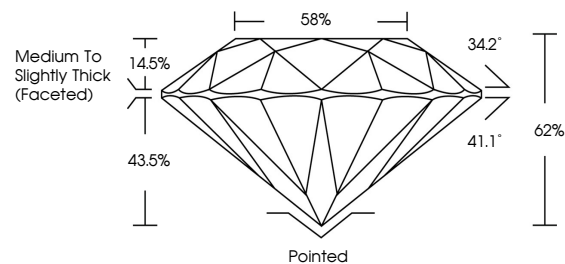
Symmetry **EXCELLENT**

Fluorescence **NONE**

Inscription(s) **LG749566088**

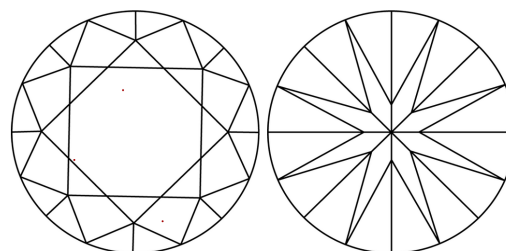
Comments: This Laboratory Grown Diamond was created by Chemical Vapor Deposition (CVD) growth process.  
Type IIa

**PROPORTIONS**



Sample Image Used

**CLARITY CHARACTERISTICS**



**KEY TO SYMBOLS**

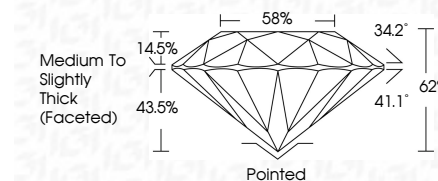
Red symbols indicate internal characteristics.  
Green symbols indicate external characteristics.

**COLOR**

D E F G H I J Faint Very Light Light

**CLARITY**

FL	IF	VVS <sup>1-2</sup>	VS <sup>1-2</sup>	SI <sup>1-2</sup>	I <sup>1-3</sup>
Flawless	Internally Flawless	Very Very Slightly Included	Very Slightly Included	Slightly Included	Included



**ADDITIONAL GRADING INFORMATION**

Polish **EXCELLENT**

Symmetry **EXCELLENT**

Fluorescence **NONE**

Inscription(s) **LG749566088**

Comments: This Laboratory Grown Diamond was created by Chemical Vapor Deposition (CVD) growth process.  
Type IIa



**IGI**



November 17, 2025  
IGI Report No **LG749566088**  
**ROUND BRILLIANT**  
**3.08 CARATS**  
E  
Carat Weight  
Color Grade **VVS 1**  
Clarity Grade **IDEAL**  
Depth **62%**  
Table **58%**  
Girdle **Medium To Slightly Thick (Faceted)**  
Culet **Pointed**  
Polish **EXCELLENT**  
Symmetry **EXCELLENT**  
Fluorescence **NONE**  
Inscription(s) **LG749566088**  
Comments: This Laboratory Grown Diamond was created by Chemical Vapor Deposition (CVD) growth process.  
Type IIa