



**ELECTRONIC COPY**

## LABORATORY GROWN DIAMOND REPORT

|                         |                          |
|-------------------------|--------------------------|
| November 15, 2025       |                          |
| IGI Report Number       | LG749565135              |
| Description             | LABORATORY GROWN DIAMOND |
| Shape and Cutting Style | EMERALD CUT              |
| Measurements            | 9.69 X 6.99 X 4.62 MM    |

## GRADING RESULTS

|               |             |
|---------------|-------------|
| Carat Weight  | 3.05 CARATS |
| Color Grade   | G           |
| Clarity Grade | VS 1        |

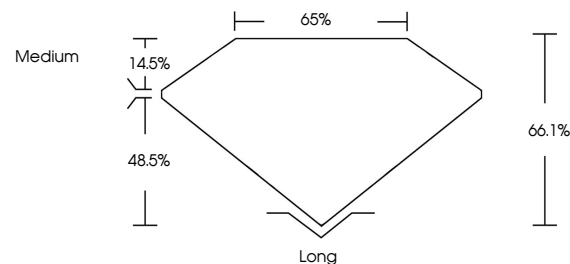
### ADDITIONAL GRADING INFORMATION

|                |                 |
|----------------|-----------------|
| Polish         | EXCELLENT       |
| Symmetry       | EXCELLENT       |
| Fluorescence   | NONE            |
| Inscription(s) | 151 LG749565135 |

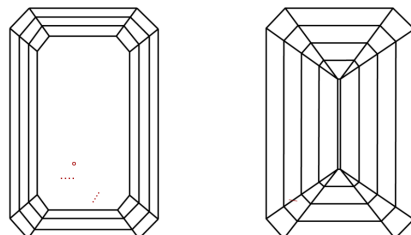
Comments: This Laboratory Grown Diamond was created by Chemical Vapor Deposition (CVD) growth process.  
Type IIa

LG749565135  
Report verification at [lgi.org](https://lgi.org)

## PROPORTIONS

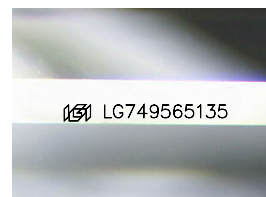


## CLARITY CHARACTERISTICS



### KEY TO SYMBOLS

Red symbols indicate internal characteristics.  
Green symbols indicate external characteristics.



Sample Image Used

## COLOR

D E F G H I J Faint Very Light Light

## CLARITY

| FL       | IF                  | VVS <sup>1-2</sup>          | VS <sup>1-2</sup>      | SI <sup>1-2</sup> | I <sup>1-3</sup> |
|----------|---------------------|-----------------------------|------------------------|-------------------|------------------|
| Flawless | Internally Flawless | Very Very Slightly Included | Very Slightly Included | Slightly Included | Included         |

## LABORATORY GROWN DIAMOND REPORT



|                         |                          |
|-------------------------|--------------------------|
| November 15, 2025       |                          |
| IGI Report Number       | LG749565135              |
| Description             | LABORATORY GROWN DIAMOND |
| Shape and Cutting Style | EMERALD CUT              |
| Measurements            | 9.69 X 6.99 X 4.62 MM    |

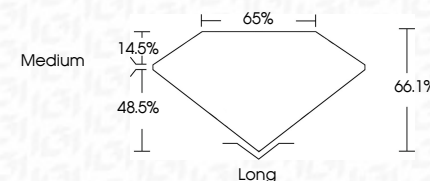
## GRADING RESULTS

|               |             |
|---------------|-------------|
| Carat Weight  | 3.05 CARATS |
| Color Grade   | G           |
| Clarity Grade | VS 1        |

### ADDITIONAL GRADING INFORMATION

|                |   |
|----------------|---|
| Polish         | EXCELLENT   |
| Symmetry       | EXCELLENT   |
| Fluorescence   | NONE  |
| Inscription(s) |  LG749566135 |

Comments: This Laboratory Grown Diamond was created by Chemical Vapor Deposition (CVD) growth process.  
Type IIa



© IGI 2020, International Gemological Institute

FD - 10 20



THIS DOCUMENT WAS PRODUCED WITH THE FOLLOWING SECURITY MEASURES: SPECIAL DOCUMENT PAPER, INK SCREENS, WATERMARK, BACKGROUND DESIGNS, HOLOGRAM AND OTHER SECURITY FEATURES NOT LISTED AND DO EXCEED DOCUMENT SECURITY INDUSTRY GUIDELINES

**www.igi.org**

November 15, 2025  
 CGI Report No LG749565135  
 EMERALD CIT

|                 |                         |
|-----------------|-------------------------|
| Carat Weight    | 3.05 CARATS             |
| Color Grade     | G                       |
| Clarity Grade   | VS 1                    |
| Depth           | 66.1%                   |
| Table           | 65%                     |
| Girdle          | Medium                  |
| Culet           | Long                    |
| Polish          | EXCELLENT               |
| Symmetry        | EXCELLENT               |
| Fluorescence    | NONE                    |
| Inscriptions(s) | see listing for details |

**Comments:**  
This Laboratory Grown Diamond was  
created by Chemical Vapor Deposition  
(CVD) growth process.