



**ELECTRONIC COPY**

## LABORATORY GROWN DIAMOND REPORT

|                         |  |
|-------------------------|--|
| November 16, 2025       |  |
| IGI Report Number       | LG749564578                                    |
| Description             | LABORATORY GROWN DIAMOND                       |
| Shape and Cutting Style | CUT CORNERED RECTANGULAR<br>MODIFIED BRILLIANT |
| Measurements            | 8.99 X 6.28 X 4.23 MM                          |

## GRADING RESULTS

|               |             |
|---------------|-------------|
| Carat Weight  | 2.02 CARATS |
| Color Grade   | G           |
| Clarity Grade | VVS 2       |

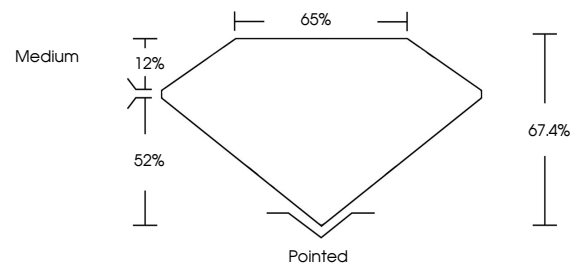
### ADDITIONAL GRADING INFORMATION

|                |   |
|----------------|---|
| Polish         | EXCELLENT   |
| Symmetry       | EXCELLENT   |
| Fluorescence   | NONE  |
| Inscription(s) |  LG749564578 |

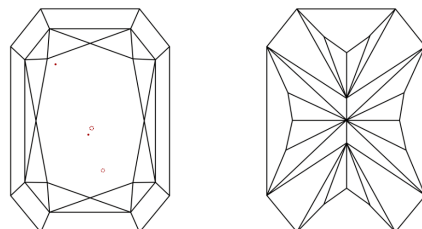
Comments: This Laboratory Grown Diamond was created by Chemical Vapor Deposition (CVD) growth process.  
Type IIa

LG749564578  
Report verification at [igi.org](https://igi.org)

## PROPORTIONS

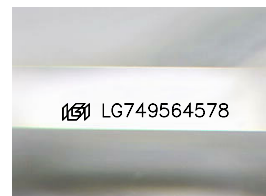


## CLARITY CHARACTERISTICS



## KEY TO SYMBOLS

Red symbols indicate internal characteristics.  
Green symbols indicate external characteristics.



Sample Image Used

**COLOR**

D E F G H I J Faint Very Light Light

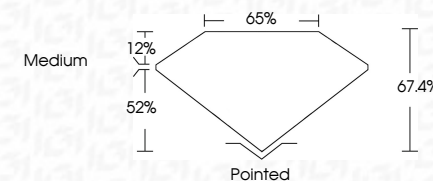
## CLARITY

| FL       | IF                  | VVS <sup>1-2</sup>          | VS <sup>1-2</sup>      | SI <sup>1-2</sup> | I <sup>1-3</sup> |
|----------|---------------------|-----------------------------|------------------------|-------------------|------------------|
| Flawless | Internally Flawless | Very Very Slightly Included | Very Slightly Included | Slightly Included | Included         |

## LABORATORY GROWN DIAMOND REPORT



|                         |   |
|-------------------------|---|
| November 16, 2025       |   |
| IGI Report Number       | LG749564578                                       |
| Description             | LABORATORY GROWN DIAMOND                          |
| Shape and Cutting Style | CUT CORNERED<br>RECTANGULAR MODIFIED<br>BRILLIANT |
| Measurements            | 8.99 X 6.28 X 4.23 MM                             |
| <b>GRADING RESULTS</b>  |   |
| Carat Weight            | 2.02 CARATS                                       |
| Color Grade             | G   |
| Clarity Grade           | VVS 2   |



### ADDITIONAL GRADING INFORMATION

|  |   |
|--|---|
| Polish   | EXCELLENT   |
| Symmetry   | EXCELLENT   |
| Fluorescence   | NONE  |
| Inscription(s)   |  LG749564578 |
| Comments: This Laboratory Grown Diamond was created by Chemical Vapor Deposition (CVD) growth process. |   |
| Type IIa   |   |



© IGI 2020, International Gemological Institute

FD - 10 20

**www.igi.org**

THIS DOCUMENT WAS PRODUCED WITH THE FOLLOWING SECURITY MEASURES: SPECIAL DOCUMENT PAPER, INK SCREENS, WATERMARK, BACKGROUND DESIGNS, HOLOGRAM AND OTHER SECURITY FEATURES NOT LISTED AND DO EXCEED DOCUMENT SECURITY INDUSTRY GUIDELINE

|                                       |                         |
|---------------------------------------|-------------------------|
| November 16, 2026                     | GI Report No LG74954578 |
| CUT CORNERED RECT. MODIFIED BRILLIANT |                         |
| 9.99 X 4.28 X 4.23 MM                 | 2.02 CARATS             |
| Color Grade                           | G                       |
| Clarity Grade                         | VVS 2                   |
| Depth                                 | 67.4%                   |
| Table                                 | 65%                     |
| Girdle                                | Medium                  |
| Culet                                 | Pointed                 |
| Polish                                | EXCELLENT               |
| Symmetry                              | EXCELLENT               |
| Fluorescence                          | NONE                    |
| Inscriptions(s)                       | 689 LG74954578          |

Comments:  
 This is a Natural, Fancy Group, Diamond was  
 created by Chemical Vapor Deposition  
 CVD growth process.  
 Type IIA