



ELECTRONIC COPY

LG749563877
Report verification at igi.org



November 20, 2025

IGI Report Number **LG749563877**

Description **LABORATORY GROWN DIAMOND**

Shape and Cutting Style **PRINCESS CUT**

Measurements **9.36 X 9.31 X 6.42 MM**

GRADING RESULTS

Carat Weight **5.00 CARATS**

Color Grade **E**

Clarity Grade **VVS 2**

LABORATORY GROWN DIAMOND REPORT

November 20, 2025

IGI Report Number **LG749563877**

Description **LABORATORY GROWN DIAMOND**

Shape and Cutting Style **PRINCESS CUT**

Measurements **9.36 X 9.31 X 6.42 MM**

GRADING RESULTS

Carat Weight **5.00 CARATS**

Color Grade **E**

Clarity Grade **VVS 2**

ADDITIONAL GRADING INFORMATION

Polish **EXCELLENT**

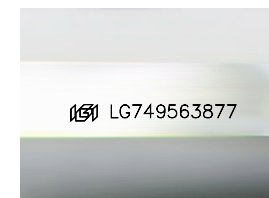
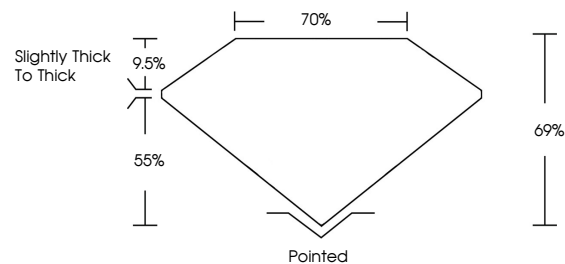
Symmetry **EXCELLENT**

Fluorescence **NONE**

Inscription(s) **IGI LG749563877**

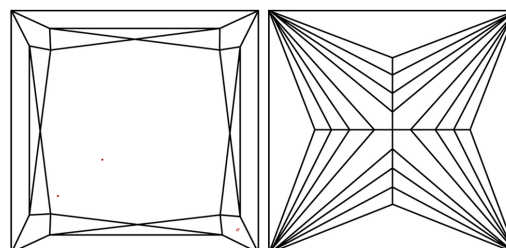
Comments: This Laboratory Grown Diamond was created by Chemical Vapor Deposition (CVD) growth process. Type IIa

PROPORTIONS



Sample Image Used

CLARITY CHARACTERISTICS



KEY TO SYMBOLS

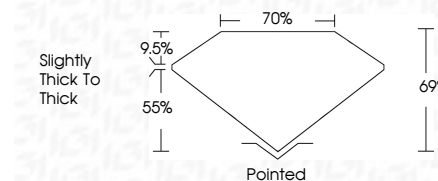
Red symbols indicate internal characteristics.
Green symbols indicate external characteristics.

COLOR

D E F G H I J Faint Very Light Light

CLARITY

FL	IF	VVS ¹⁻²	VS ¹⁻²	SI ¹⁻²	I ¹⁻³
Flawless	Internally Flawless	Very Very Slightly Included	Very Slightly Included	Slightly Included	Included



ADDITIONAL GRADING INFORMATION

Polish **EXCELLENT**

Symmetry **EXCELLENT**

Fluorescence **NONE**

Inscription(s) **IGI LG749563877**

Comments: This Laboratory Grown Diamond was created by Chemical Vapor Deposition (CVD) growth process. Type IIa



IGI



November 20, 2025
IGI Report No LG749563877
PRINCESS CUT

5.00 CARATS
E

9.36 X 9.31 X 6.42 MM
Carat Weight
Color Grade
Clarity Grade
Depth
Table
Girdle

5.00 CARATS
E
VVS 2
69%
70%

Slightly Thick To Thick

Pointed
EXCELLENT
EXCELLENT
NONE
IGI LG749563877

Comments: This Laboratory Grown Diamond was created by Chemical Vapor Deposition (CVD) growth process. Type IIa